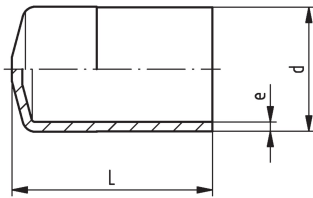


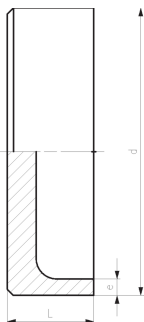
**SYGEF Plus End cap**  
**SDR21/PN16**  
**High Purity clean-room product ISO Class 5 (100)**

**Model:**

- Material: PVDF-HP
- Type A: injection molded
- Type B: machined, incl. facing mark (must not be exceeded)



Type A



Type B

d (mm)	SDR	PN (bar)	FM	Code	L (mm)	e (mm)	Type
20	21	16	BCF, IR	<b>735 968 106</b>	47	1.9	A
25	21	16	BCF, IR	<b>735 968 107</b>	47	1.9	A
32	21	16	BCF, IR	<b>735 968 108</b>	52	2.4	A
40	21	16	IR	<b>735 968 334</b>	30	2.4	B
50	21	16	IR	<b>735 968 335</b>	30	3.0	B
63	21	16	IR	<b>735 968 336</b>	30	3.0	B
75	21	16	IR	<b>735 968 337</b>	30	3.6	B
90	21	16	IR	<b>735 968 338</b>	30	4.3	B
110	21	16	IR	<b>735 968 339</b>	45	5.3	B
140	21	16	IR	<b>735 968 341</b>	45	6.7	B
160	21	16	IR	<b>735 968 342</b>	46	7.7	B
200	21	16	IR	<b>735 968 344</b>	54	9.6	B
225	21	16	IR	<b>735 968 345</b>	57	10.8	B

The technical data are not binding. They neither constitute expressly warranted characteristics nor guaranteed properties nor a guaranteed durability. They are subject to modification. Our General Terms of Sale apply.

Georg Fischer Piping Systems Ltd, Postfach, CH-8201 Schaffhausen/Switzerland

Phone +41 -(0)52-631 1111

e-mail: [info.ps@georgfischer.com](mailto:info.ps@georgfischer.com)

Internet: <http://www.gfps.com>