



## Diaphragm valve type 317 PVC-C SF With flanges

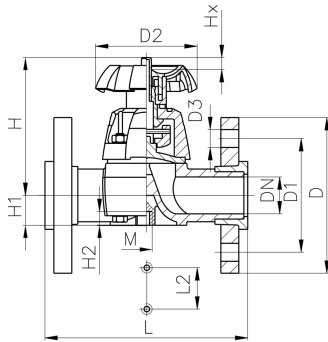
### Model:

- Silicone free/paint-compatible
- Flat sealing faces
- DN 15-65 with backing flange
- DN 80-150 with fixed flange
- Overall length according to EN 558

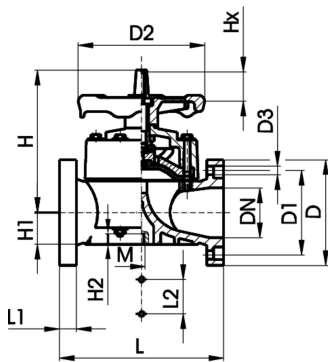
### Option:

- Handwheel lockable DN15-65 (basic version not lockable)

\* **DN80 and DN150 fixed flanges metric and inch ANSI B16.5**



DN 15-65



DN 80-100

	d (mm)	Size (inch)	DN (mm)	PN (bar)	kv-value ( $\Delta p=1$ bar) (l/min)	EPDM Code	Weight (kg)	PTFE with EPDM supp. Diaphragm Code	Weight (kg)
	75	2 1/2	65	10	992	<b>163 317 723</b>	4.425	<b>163 317 738</b>	4.425
*	90	3	80	10	1700	<b>163 317 724</b>	9.750	<b>163 317 739</b>	9.750
	110	4	100	10	2700	<b>163 317 725</b>	13.600	<b>163 317 740</b>	13.600

	d (mm)	D (mm)	D1 (mm)	D2 (mm)	D3 (mm)	H (mm)	H1 (mm)	H2 (mm)	L (mm)	L1 (mm)	L2 (mm)	M	AL
	75	185	145	152	18	201	46	15	290		70	M8	4
*	90	200	160	270	18	265	57	23	310	35	120	M12	8
	110	225	180	270	18	304	69	23	350	35	120	M12	8

The technical data are not binding. They neither constitute expressly warranted characteristics nor guaranteed properties nor a guaranteed durability. They are subject to modification. Our General Terms of Sale apply.

Georg Fischer Piping Systems Ltd, Postfach, CH-8201 Schaffhausen/Switzerland

Phone +41 -(0)52-631 1111

e-mail: [info.ps@georgfischer.com](mailto:info.ps@georgfischer.com)

Internet: <http://www.gfps.com>