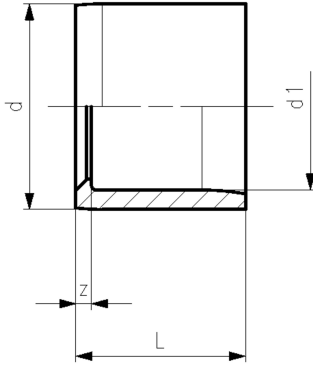
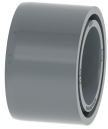


## Reducing bush short PVC-U metric



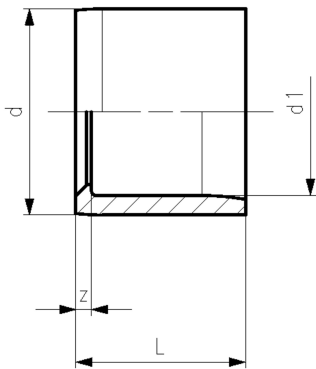
### Model:

- With solvent cement spigot and socket metric

	d (mm)	d1 (mm)	PN (bar)	Size (inch)	Code	SP	Weight (kg)	z (mm)	L (mm)
*	12	8	16		721 900 329	1	0.002	2	14
*	16	12	16		721 900 331	10	0.002	2	14
*	20	16	16		721 900 334	10	0.002	2	16
*	25	20	16		721 900 337	10	0.004	3	19
*	32	20	16		721 900 342	10	0.014	6	22
*	32	25	16		721 900 341	10	0.009	3	22
	40	20	16		721 900 348	10	0.021	10	26
	40	25	16		721 900 347	10	0.021	7	26
*	40	32	16		721 900 346	10	0.016	4	26
	50	20	16		721 900 355	10	0.037	15	31
	50	25	16		721 900 354	10	0.034	12	31
	50	32	16		721 900 353	10	0.036	9	31
*	50	40	16		721 900 352	10	0.030	5	31
	63	32	16		721 900 360	10	0.064	16	38
	63	40	16		721 900 359	10	0.067	12	38
*	63	50	16		721 900 358	10	0.058	7	38
	75	50	16	2 ½	721 900 365	10	0.109	13	44
*	75	63	16	2 ½	721 900 364	10	0.078	6	44
	90	50	16		721 900 372	10	0.181	20	51
	90	63	16		721 900 371	12	0.183	13	51
*	90	75	16		721 900 370	10	0.135	7	51
	110	50	16		721 900 379	5	0.316	30	61
	110	63	16		721 900 378	5	0.308	23	61
	110	75	16		721 900 377	20	0.295	17	61
*	110	90	16		721 900 376	5	0.259	10	61
	125	90	16		721 900 381	5	0.465	18	69
*	125	110	16		721 900 380	5	0.267	8	69
	140	90	16	5	721 900 386	5	0.562	25	76
*	140	110	16	5	721 900 385	5	0.605	15	76
*	140	125	16	5	721 900 384	5	0.331	7	76
	160	90	16		721 900 391	6	0.751	35	86
	160	110	16		721 900 390	6	0.883	25	86
*	160	140	16		721 900 388	5	0.551	10	86
	200	110	10		721 900 393	3	1.985	45	108
	200	125	10		721 900 325	3	2.024	37	108
	200	140	10		721 900 394	3	1.928	29	108
*	200	160	10		721 900 392	2	1.085	20	108
	225	110	10		721 900 397	4	2.544	57	120
	225	125	10		721 900 399	4	2.563	49	120
	225	140	10		721 900 398	4	2.609	41	120
	225	160	10		721 900 396	2	2.199	31	119
*	225	200	10		721 900 181	9	1.360	13	119
	250	125	10		721 900 326	4	3.150	11	131
	250	140	10		721 900 300	4	3.200	54	133
	250	160	10		721 900 301	4	3.390	44	133
*	250	200	10		721 900 302	4	3.198	24	133
*	250	225	10		721 900 303	4	1.686	11	133
	280	140	10		721 900 307	1	4.157	69	148
	280	160	10		721 900 308	1	4.170	60	148
	280	200	10		721 900 304	1	4.577	39	148
*	280	225	10		721 900 305	1	4.409	27	146
*	280	250	10		721 900 306	1	2.515	14	148
	315	160	6		721 900 313	1	5.188	77	166
	315	200	6		721 900 309	1	5.480	57	166

# Data sheet

valid from: 6/22/21



	d	d1	PN	Size	Code	SP	Weight	z	L
	(mm)	(mm)	(bar)	(inch)			(kg)	(mm)	(mm)
	315	225	6		<b>721 900 310</b>	1	6.035	44	166
*	315	250	6		<b>721 900 311</b>	1	6.481	32	166
*	315	280	6		<b>721 900 312</b>	1	4.055	28	167
	355	315	6		<b>721 900 315</b>	1	5.792	23	206
	400	250	6		<b>721 900 319</b>	1	11.528	60	206
	400	280	6		<b>721 900 320</b>	1	11.366	60	206
*	400	315	6		<b>721 900 321</b>	1	13.006	42	206
*	400	355	6		<b>721 900 322</b>	1	7.524	22	206

The technical data are not binding. They neither constitute expressly warranted characteristics nor guaranteed properties nor a guaranteed durability. They are subject to modification. Our General Terms of Sale apply.

Georg Fischer Piping Systems Ltd, Postfach, CH-8201 Schaffhausen/Switzerland

Phone +41 -(0)52-631 1111

e-mail: [info.ps@georgfischer.com](mailto:info.ps@georgfischer.com)

Internet: <http://www.gfps.com>