

# SUMMARY FITTING SERIES A, B, C, D



● STANDARD FITTINGS SERIES A

D2.2



● COMPRESSION FITTINGS SERIES B

D2.8



● QUICK FITTINGS SERIES C

D2.11

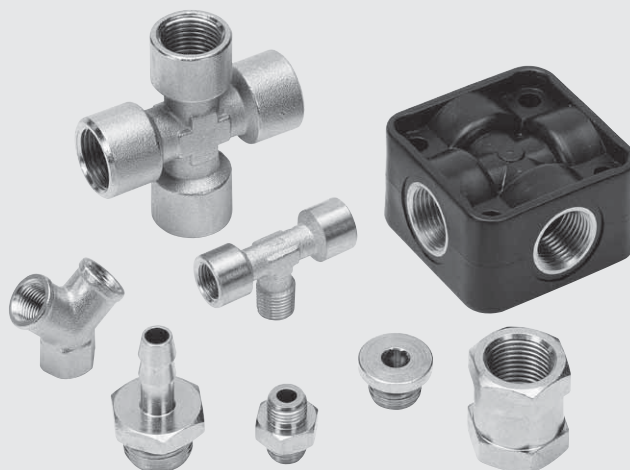


● BANJO FITTINGS SERIES D

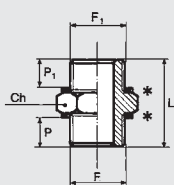
D2.15

# STANDARD FITTINGS SERIES A

- Body: OT58 brass
- Maximum pressure 870 psi, 6000 KPa 60 bar



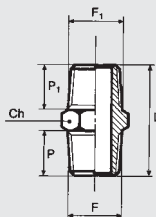
## NIPPLE, PARALLEL (A1)



| Code    | Ref. | F   | F1  | Ch | P    | P1   | L    |
|---------|------|-----|-----|----|------|------|------|
| 2101A00 | A1   | M5  | M5  | 8  | 4.0  | 4.0  | 11.5 |
| 2101000 | A1   | M5  | 1/8 | 14 | 4.0  | 6.0  | 14.5 |
| 2101001 | A1   | 1/8 | 1/8 | 14 | 6.0  | 6.0  | 17.0 |
| 2101002 | A1   | 1/8 | 1/4 | 17 | 6.0  | 8.0  | 19.0 |
| 2101003 | A1   | 1/8 | 3/8 | 20 | 6.0  | 9.0  | 20.0 |
| 2101004 | A1   | 1/4 | 1/4 | 17 | 8.0  | 8.0  | 21.0 |
| 2101005 | A1   | 1/4 | 3/8 | 20 | 8.0  | 9.0  | 22.0 |
| 2101006 | A1   | 1/4 | 1/2 | 25 | 8.0  | 10.0 | 24.0 |
| 2101007 | A1   | 3/8 | 3/8 | 20 | 9.0  | 9.0  | 24.0 |
| 2101008 | A1   | 3/8 | 1/2 | 25 | 9.0  | 10.0 | 25.5 |
| 2101009 | A1   | 1/2 | 1/2 | 25 | 10.0 | 10.0 | 26.5 |
| 2101010 | A1   | 1/2 | 3/4 | 30 | 10.0 | 11.0 | 27.0 |
| 2101011 | A1   | 3/4 | 3/4 | 30 | 11.0 | 11.0 | 28.0 |

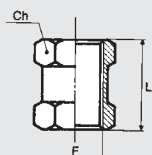
\* Washer D11 can be used

## NIPPLE, CONICAL (A2)



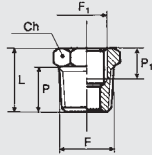
| Code    | Ref. | F   | F1  | Ch | P    | P1   | L    |
|---------|------|-----|-----|----|------|------|------|
| 2102001 | A2   | 1/8 | 1/8 | 12 | 8.0  | 8.0  | 21.0 |
| 2102002 | A2   | 1/8 | 1/4 | 14 | 8.0  | 11.0 | 24.0 |
| 2102003 | A2   | 1/8 | 3/8 | 17 | 8.0  | 11.5 | 25.0 |
| 2102004 | A2   | 1/4 | 1/4 | 14 | 11.0 | 11.0 | 27.0 |
| 2102005 | A2   | 1/4 | 3/8 | 17 | 11.0 | 11.5 | 28.0 |
| 2102006 | A2   | 1/4 | 1/2 | 22 | 11.0 | 14.0 | 32.0 |
| 2102007 | A2   | 3/8 | 3/8 | 17 | 11.5 | 11.5 | 29.0 |
| 2102008 | A2   | 3/8 | 1/2 | 22 | 11.5 | 14.0 | 32.5 |
| 2102009 | A2   | 1/2 | 1/2 | 22 | 14.0 | 14.0 | 35.0 |
| 2102010 | A2   | 1/2 | 3/4 | 27 | 14.0 | 16.5 | 37.5 |
| 2102011 | A2   | 3/4 | 3/4 | 27 | 16.5 | 16.5 | 40.0 |

## SLEEVE (A3)



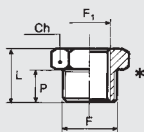
| Code    | Ref. | F   | Ch | L    |
|---------|------|-----|----|------|
| 2103000 | A3   | M5  | 8  | 11.0 |
| 2103001 | A3   | 1/8 | 14 | 15.0 |
| 2103002 | A3   | 1/4 | 17 | 22.0 |
| 2103003 | A3   | 3/8 | 22 | 24.0 |
| 2103004 | A3   | 1/2 | 27 | 30.0 |

**REDUCER, CONICAL (A4)**



| Code    | Ref. | F   | F1  | Ch | P    | P1   | L    |
|---------|------|-----|-----|----|------|------|------|
| 2104001 | A4   | 1/4 | 1/8 | 14 | 11.0 | 7.0  | 16.0 |
| 2104002 | A4   | 3/8 | 1/8 | 17 | 11.5 | 7.0  | 17.0 |
| 2104003 | A4   | 3/8 | 1/4 | 17 | 11.5 | 8.0  | 17.0 |
| 2104004 | A4   | 1/2 | 1/4 | 22 | 14.0 | 8.0  | 20.0 |
| 2104005 | A4   | 1/2 | 3/8 | 22 | 14.0 | 10.0 | 20.0 |
| 2104006 | A4   | 3/4 | 1/2 | 27 | 16.5 | 11.0 | 23.5 |

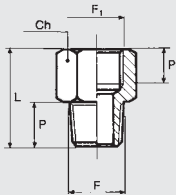
**REDUCER, PARALLEL (A4/Z)**



| Code    | Ref. | F   | F1  | Ch | P    | L    |
|---------|------|-----|-----|----|------|------|
| 2151000 | A4/Z | 1/8 | M5  | 14 | 6.0  | 10.0 |
| 2151001 | A4/Z | 1/4 | 1/8 | 17 | 8.0  | 13.0 |
| 2151002 | A4/Z | 3/8 | 1/8 | 20 | 9.0  | 14.0 |
| 2151003 | A4/Z | 3/8 | 1/4 | 20 | 9.0  | 14.0 |
| 2151004 | A4/Z | 1/2 | 1/4 | 25 | 10.0 | 15.5 |
| 2151005 | A4/Z | 1/2 | 3/8 | 25 | 10.0 | 15.5 |

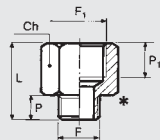
\* Washer D11 can be used

**REDUCER, CONICAL (A5)**



| Code    | Ref. | F   | F1  | Ch | P    | P1   | L    |
|---------|------|-----|-----|----|------|------|------|
| 2105001 | A5   | 1/8 | 1/8 | 14 | 8.0  | 7.0  | 20.0 |
| 2105002 | A5   | 1/8 | 1/4 | 17 | 8.0  | 8.0  | 22.5 |
| 2105003 | A5   | 1/4 | 1/4 | 17 | 11.0 | 8.0  | 25.0 |
| 2105004 | A5   | 1/4 | 3/8 | 22 | 11.0 | 10.0 | 28.5 |
| 2105005 | A5   | 3/8 | 3/8 | 22 | 11.5 | 10.0 | 28.5 |
| 2105006 | A5   | 3/8 | 1/2 | 24 | 11.5 | 11.0 | 32.0 |
| 2105007 | A5   | 1/2 | 1/2 | 24 | 14.0 | 11.0 | 34.0 |

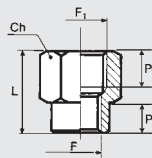
**REDUCER, PARALLEL (A5/Z)**



| Code    | Ref. | F   | F1  | Ch | P    | P1   | L    |
|---------|------|-----|-----|----|------|------|------|
| 2152001 | A5/Z | M5  | 1/8 | 12 | 4.0  | 7.0  | 17.0 |
| 2152002 | A5/Z | 1/8 | 1/8 | 14 | 6.0  | 7.0  | 18.5 |
| 2152003 | A5/Z | 1/8 | 1/4 | 17 | 6.0  | 8.0  | 21.5 |
| 2152004 | A5/Z | 1/4 | 1/4 | 17 | 8.0  | 8.0  | 22.5 |
| 2152005 | A5/Z | 1/4 | 3/8 | 22 | 8.0  | 10.0 | 26.0 |
| 2152006 | A5/Z | 3/8 | 3/8 | 22 | 9.0  | 10.0 | 26.5 |
| 2152007 | A5/Z | 3/8 | 1/2 | 24 | 9.0  | 11.0 | 29.5 |
| 2152008 | A5/Z | 1/2 | 1/2 | 25 | 10.0 | 11.0 | 29.5 |

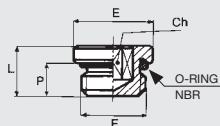
\* Washer D11 can be used

**REDUCER (A6)**



| Code    | Ref. | F   | F1  | Ch | P    | P1   | L    |
|---------|------|-----|-----|----|------|------|------|
| 2106001 | A6   | 1/8 | 1/4 | 17 | 8.0  | 8.0  | 21.5 |
| 2106002 | A6   | 1/8 | 3/8 | 22 | 7.0  | 10.0 | 23.5 |
| 2106003 | A6   | 1/4 | 3/8 | 22 | 9.0  | 10.0 | 25.5 |
| 2106004 | A6   | 1/4 | 1/2 | 24 | 9.0  | 11.0 | 28.5 |
| 2106005 | A6   | 3/8 | 1/2 | 24 | 11.0 | 11.0 | 29.5 |

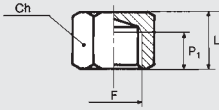
**PLUG WITH EXAGON EMBEDDED (A7)**



| Code     | Ref. | F   | Ch  | P    | L    | E  | O ring  |
|----------|------|-----|-----|------|------|----|---------|
| 2107000  | A7   | M5  | 2.5 | 4.0  | 6.5  | 8  | 3.5x1.2 |
| 2107005  | A7   | M7  | 3   | 5.0  | 7.4  | 10 | 5x1.5   |
| 2107M01* | A7   | 1/8 | 4   | 5.2  | 7.2  | 13 | 2031    |
| 2107001  | A7   | 1/8 | 3   | 7.0  | 9.5  | 15 | 2031    |
| 2107002  | A7   | 1/4 | 6   | 8.0  | 11.0 | 18 | 2043    |
| 2107003  | A7   | 3/8 | 8   | 9.0  | 12.5 | 21 | 2056    |
| 2107004  | A7   | 1/2 | 10  | 11.0 | 14.5 | 26 | 3068    |

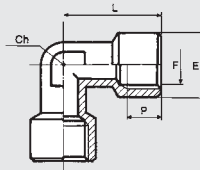
\* Miniaturized version

**NUB (A8)**



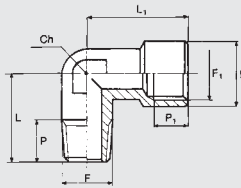
| Code    | Ref. | F   | Ch | P1   | L    |
|---------|------|-----|----|------|------|
| 2108001 | A8   | 1/8 | 14 | 7.0  | 13.0 |
| 2108002 | A8   | 1/4 | 17 | 8.0  | 15.0 |
| 2108003 | A8   | 3/8 | 20 | 10.0 | 17.5 |
| 2108004 | A8   | 1/2 | 24 | 11.0 | 20.0 |

**ELBOW, FEMALE (A9)**



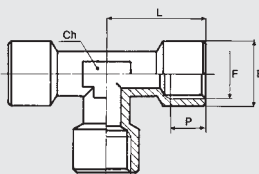
| Code    | Ref. | F   | Ch | P    | L    | E    |
|---------|------|-----|----|------|------|------|
| 2109001 | A9   | 1/8 | 10 | 7.0  | 20.5 | 13.5 |
| 2109002 | A9   | 1/4 | 13 | 8.0  | 26.0 | 17.0 |
| 2109003 | A9   | 3/8 | 15 | 10.0 | 30.0 | 20.5 |
| 2109004 | A9   | 1/2 | 20 | 11.0 | 36.0 | 25.5 |

**ELBOW, MALE-FEMALE (A10)**



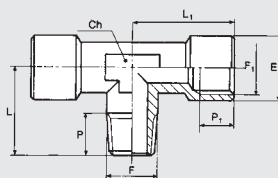
| Code    | Ref. | F   | F1  | Ch | P    | P1   | L    | L1   | E    |
|---------|------|-----|-----|----|------|------|------|------|------|
| 2110001 | A10  | 1/8 | 1/8 | 10 | 8.0  | 7.0  | 16.5 | 20.5 | 13.5 |
| 2110002 | A10  | 1/4 | 1/4 | 13 | 10.5 | 8.0  | 24.5 | 26.0 | 17.0 |
| 2110003 | A10  | 3/8 | 3/8 | 15 | 11.0 | 10.0 | 26.0 | 30.0 | 20.5 |
| 2110004 | A10  | 1/2 | 1/2 | 20 | 13.0 | 11.0 | 30.0 | 36.0 | 25.5 |

**TEE, FEMALE (A11)**



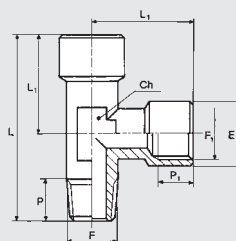
| Code    | Ref. | F   | Ch | P    | L    | E    |
|---------|------|-----|----|------|------|------|
| 2111001 | A11  | 1/8 | 10 | 7.0  | 20.5 | 13.5 |
| 2111002 | A11  | 1/4 | 13 | 8.0  | 26.0 | 17.0 |
| 2111003 | A11  | 3/8 | 15 | 10.0 | 30.0 | 20.5 |
| 2111004 | A11  | 1/2 | 20 | 11.0 | 36.0 | 25.5 |

**TEE, CENTRAL MALE (A12)**



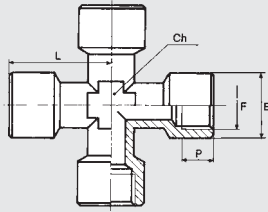
| Code    | Ref. | F   | F1  | Ch | P    | P1   | L    | L1   | E    |
|---------|------|-----|-----|----|------|------|------|------|------|
| 2112001 | A12  | 1/8 | 1/8 | 10 | 8.0  | 7.0  | 16.5 | 20.5 | 13.5 |
| 2112002 | A12  | 1/4 | 1/4 | 13 | 10.5 | 8.0  | 24.5 | 26.0 | 17.0 |
| 2112003 | A12  | 3/8 | 3/8 | 15 | 11.0 | 10.0 | 26.0 | 30.0 | 20.5 |
| 2112004 | A12  | 1/2 | 1/2 | 20 | 13.0 | 11.0 | 30.0 | 36.0 | 25.5 |

**TEE, LATERAL MALE (A13)**



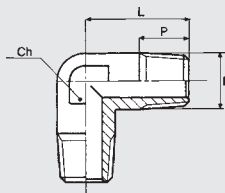
| Code    | Ref. | F   | F1  | Ch | P    | P1   | L    | L1   | E    |
|---------|------|-----|-----|----|------|------|------|------|------|
| 2113001 | A13  | 1/8 | 1/8 | 10 | 8.0  | 7.0  | 37.0 | 20.5 | 13.5 |
| 2113002 | A13  | 1/4 | 1/4 | 13 | 10.5 | 8.0  | 50.5 | 26.0 | 17.0 |
| 2113003 | A13  | 3/8 | 3/8 | 15 | 11.0 | 10.0 | 56.0 | 30.0 | 20.5 |
| 2113004 | A13  | 1/2 | 1/2 | 20 | 13.0 | 11.0 | 66.0 | 36.0 | 25.5 |

### EQUAL FEMALE CROSS (A14)



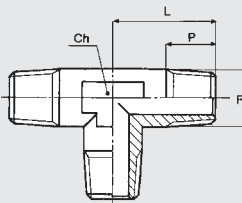
| Code    | Ref. | F   | Ch | P    | L    | E    |
|---------|------|-----|----|------|------|------|
| 2114001 | A14  | 1/8 | 10 | 7.0  | 20.5 | 13.5 |
| 2114002 | A14  | 1/4 | 13 | 8.0  | 26.0 | 17.0 |
| 2114003 | A14  | 3/8 | 15 | 10.0 | 28.0 | 20.5 |

### ELBOW, MALE (A15)



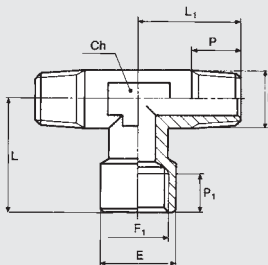
| Code    | Ref. | F   | Ch | P    | L    |
|---------|------|-----|----|------|------|
| 2115001 | A15  | 1/8 | 10 | 8.0  | 16.5 |
| 2115002 | A15  | 1/4 | 13 | 10.5 | 24.5 |
| 2115003 | A15  | 3/8 | 15 | 11.0 | 26.0 |
| 2115004 | A15  | 1/2 | 20 | 13.0 | 30.0 |

### TEE, MALE (A16)



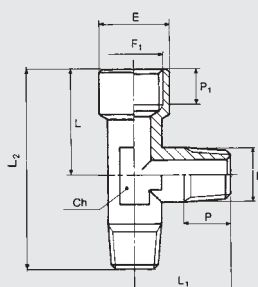
| Code    | Ref. | F   | Ch | P    | L    |
|---------|------|-----|----|------|------|
| 2116001 | A16  | 1/8 | 10 | 8.0  | 16.5 |
| 2116002 | A16  | 1/4 | 13 | 10.5 | 24.5 |
| 2116003 | A16  | 3/8 | 15 | 11.0 | 26.0 |
| 2116004 | A16  | 1/2 | 20 | 13.0 | 30.0 |

### TEE, CENTRAL FEMALE (A17)



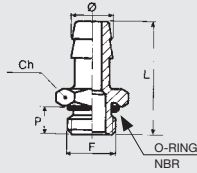
| Code    | Ref. | F   | F1  | Ch | P    | P1   | L    | L1   | E    |
|---------|------|-----|-----|----|------|------|------|------|------|
| 2117001 | A17  | 1/4 | 1/4 | 13 | 10.5 | 8.0  | 26.0 | 24.5 | 17.0 |
| 2117002 | A17  | 1/8 | 1/8 | 10 | 8.0  | 7.0  | 20.5 | 16.5 | 13.5 |
| 2117003 | A17  | 3/8 | 3/8 | 15 | 11.0 | 10.0 | 30.0 | 26.0 | 20.5 |
| 2117004 | A17  | 1/2 | 1/2 | 20 | 13.0 | 11.0 | 36.0 | 30.0 | 25.5 |

### TEE, LATERAL FEMALE (A18)



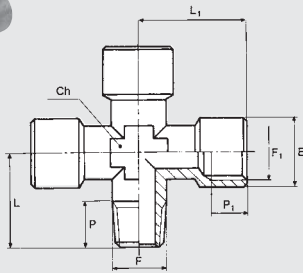
| Code    | Ref. | F   | F1  | Ch | P    | P1   | L    | L1   | E    | L2   |
|---------|------|-----|-----|----|------|------|------|------|------|------|
| 2118000 | A18  | 1/8 | 1/8 | 10 | 8.0  | 7.0  | 20.5 | 16.5 | 13.5 | 37.0 |
| 2118001 | A18  | 1/4 | 1/4 | 13 | 10.5 | 8.0  | 26.0 | 24.5 | 17.0 | 50.5 |
| 2118002 | A18  | 3/8 | 3/8 | 15 | 11.0 | 10.0 | 30.0 | 26.0 | 20.5 | 56.0 |
| 2118003 | A18  | 1/2 | 1/2 | 20 | 13.0 | 11.0 | 36.0 | 30.0 | 25.5 | 66.0 |

**HOSE ADAPTER, PARALLEL (A19)**



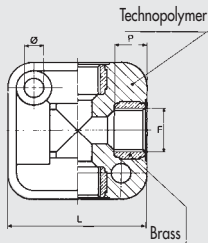
| Code    | Ref. | Ø  | F   | Ch | P    | L    | O ring |
|---------|------|----|-----|----|------|------|--------|
| 2119001 | A19  | 7  | 1/8 | 15 | 6.0  | 31.0 | 2031   |
| 2119002 | A19  | 7  | 1/4 | 18 | 8.0  | 33.0 | 2043   |
| 2119003 | A19  | 8  | 1/8 | 15 | 6.0  | 31.0 | 2031   |
| 2119004 | A19  | 9  | 1/8 | 15 | 6.0  | 31.0 | 2031   |
| 2119005 | A19  | 9  | 1/4 | 18 | 8.0  | 33.0 | 2043   |
| 2119006 | A19  | 9  | 3/8 | 21 | 9.0  | 34.0 | 2056   |
| 2119007 | A19  | 12 | 1/4 | 18 | 8.0  | 33.0 | 2043   |
| 2119008 | A19  | 12 | 3/8 | 21 | 9.0  | 34.0 | 2056   |
| 2119009 | A19  | 12 | 1/2 | 26 | 11.0 | 36.0 | 3068   |
| 2119010 | A19  | 17 | 3/8 | 21 | 9.0  | 34.0 | 2056   |
| 2119011 | A19  | 17 | 1/2 | 26 | 11.0 | 36.0 | 3068   |

**MALE-FEMALE EQUAL CROSS (A20)**



| Code    | Ref. | F   | F1  | Ch | P    | P1  | L    | L1   | E    |
|---------|------|-----|-----|----|------|-----|------|------|------|
| 2120001 | A20  | 1/8 | 1/8 | 10 | 8.0  | 7.0 | 16.5 | 20.5 | 13.5 |
| 2120002 | A20  | 1/4 | 1/4 | 13 | 10.5 | 8.0 | 24.5 | 26.0 | 17.0 |

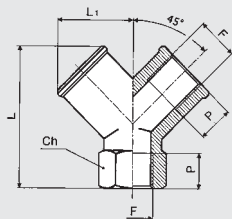
**TEE CROSS (A21)**



| Code    | Ref. | F   | Ø   | P    | L    | THICKNESS |
|---------|------|-----|-----|------|------|-----------|
| 2121001 | A21  | 1/8 | 4.5 | 8.0  | 31.0 | 17.5      |
| 2121002 | A21  | 1/4 | 5.5 | 9.0  | 40.0 | 24.0      |
| 2121003 | A21  | 3/8 | 5.5 | 12.0 | 50.0 | 28.0      |
| 2121004 | A21  | 1/2 | 5.5 | 12.0 | 50.0 | 34.0      |

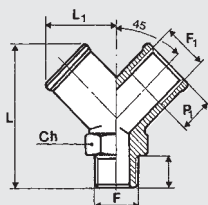
Maximum operating conditions for the A21s are different from other A-series fittings, namely max P13 bar, max T 50°C

**Y, FEMALE 90° (A23)**



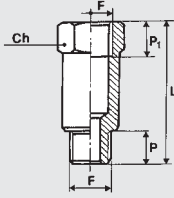
| Code    | Ref. | F   | Ch | P    | L    | L1   |
|---------|------|-----|----|------|------|------|
| 2123001 | A23  | 1/8 | 13 | 8    | 26.5 | 14.5 |
| 2123002 | A23  | 1/4 | 17 | 11   | 32.0 | 18.0 |
| 2123003 | A23  | 3/8 | 20 | 11.5 | 36.5 | 20.5 |
| 2123004 | A23  | 1/2 | 25 | 14   | 44.5 | 26.5 |

**Y, MALE 90° (A24)**



| Code    | Ref. | F   | F1  | Ch | P    | P1   | L    | L1   |
|---------|------|-----|-----|----|------|------|------|------|
| 2124001 | A24  | 1/8 | 1/8 | 13 | 8.0  | 8.0  | 32.0 | 14.5 |
| 2124002 | A24  | 1/4 | 1/4 | 17 | 11.0 | 11.0 | 38.0 | 18.0 |
| 2124003 | A24  | 3/8 | 3/8 | 20 | 11.5 | 11.5 | 42.0 | 20.5 |
| 2124004 | A24  | 1/2 | 1/2 | 25 | 14.0 | 14.0 | 53.0 | 26.5 |

**EXTENSION (A25)**



| Code    | Rif. | F   | Ch | P   | L    | P1   |
|---------|------|-----|----|-----|------|------|
| 2150003 | A25  | 1/8 | 14 | 6.0 | 22.0 | 8.0  |
| 2150004 | A25  | 1/8 | 14 | 6.0 | 42.0 | 8.0  |
| 2150005 | A25  | 1/8 | 14 | 6.0 | 51.0 | 8.0  |
| 2150006 | A25  | 1/4 | 17 | 8.0 | 35.0 | 11.0 |
| 2150007 | A25  | 1/4 | 17 | 8.0 | 51.0 | 11.0 |

**TAPERED THREAD FITTINGS SERIES A WITH PTFE**

Metal Work can supply fittings with a tapered thread coated in polytetrafluorethylene. This system provides the pneumatic seal between the fitting and the female thread. It is therefore not necessary to add other sealing systems during assembly, such as adhesives or Teflon tape. This significantly reduces assembly times. The physical and technical features of the material used ensure that the properties are maintained through time and in a wide range of operating temperatures. This coating can be used with series A fittings types A2, A4, A5, A10, A12, A13, A15, A16, A17, A18 and A25 that have a 1/8" to 1/2" gas taper thread.

**TECHNICAL DATA**

|                            |    |               |
|----------------------------|----|---------------|
| Temperature range for PTFE | °C | - 45 to + 80  |
|                            | °F | - 49 to + 176 |

**KEY TO CODES**

Fittings with a PTFE thread have the same code as the standard fitting, with the addition of the suffix **T**. For example A2 1/8 1/8 fitting has code **2102001**, so the PTFE version has code **2102001T**.

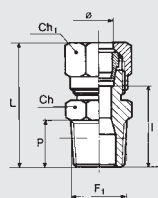
**NOTES**

# COMPRESSION FITTINGS SERIES B

- Body: OT58 brass
- Maximum pressure 870 psi, 6000 kPa 60 bar
- For use with copper tubes

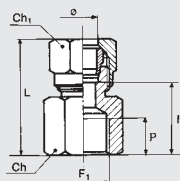


## STRAIGHT, MALE CONICAL (B1)



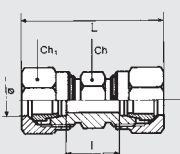
| Code    | Ref. | Ø     | F1  | Ch | Ch1 | P    | L    | I    |
|---------|------|-------|-----|----|-----|------|------|------|
| 2201001 | B1   | 4/2   | 1/8 | 10 | 10  | 8.0  | 27.5 | 16.0 |
| 2201002 | B1   | 6/4   | 1/8 | 12 | 12  | 8.0  | 28.0 | 14.5 |
| 2201003 | B1   | 6/4   | 1/4 | 14 | 12  | 11.0 | 31.0 | 17.5 |
| 2201004 | B1   | 8/6   | 1/8 | 12 | 14  | 8.0  | 30.0 | 16.5 |
| 2201005 | B1   | 8/6   | 1/4 | 14 | 14  | 11.0 | 33.0 | 19.5 |
| 2201006 | B1   | 8/6   | 3/8 | 17 | 14  | 11.5 | 33.5 | 20.0 |
| 2201007 | B1   | 10/8  | 1/4 | 17 | 19  | 11.0 | 38.5 | 20.0 |
| 2201008 | B1   | 10/8  | 3/8 | 17 | 19  | 11.5 | 39.0 | 20.5 |
| 2201009 | B1   | 10/8  | 1/2 | 22 | 19  | 14.0 | 42.5 | 24.0 |
| 2201010 | B1   | 12/10 | 3/8 | 19 | 22  | 11.5 | 38.5 | 20.5 |
| 2201011 | B1   | 12/10 | 1/2 | 22 | 22  | 14.0 | 42.0 | 24.0 |
| 2201012 | B1   | 15/12 | 1/2 | 22 | 27  | 14.0 | 43.5 | 25.0 |

## STRAIGHT, FEMALE (B2)



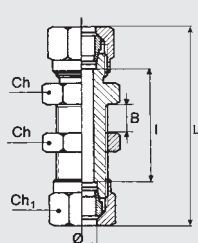
| Code    | Ref. | Ø    | F1  | Ch | Ch1 | P  | L    | I    |
|---------|------|------|-----|----|-----|----|------|------|
| 2202001 | B2   | 6/4  | 1/8 | 14 | 12  | 7  | 28.5 | 15.0 |
| 2202002 | B2   | 6/4  | 1/4 | 17 | 12  | 8  | 31.5 | 18.0 |
| 2202003 | B2   | 8/6  | 1/8 | 14 | 14  | 7  | 29.5 | 16.0 |
| 2202004 | B2   | 8/6  | 1/4 | 17 | 14  | 8  | 32.0 | 18.5 |
| 2202005 | B2   | 8/6  | 3/8 | 22 | 14  | 10 | 36.0 | 22.5 |
| 2202006 | B2   | 10/8 | 1/4 | 17 | 19  | 8  | 37.5 | 19.0 |
| 2202007 | B2   | 10/8 | 3/8 | 22 | 19  | 10 | 41.0 | 22.5 |

## STRAIGHT, CONNECTOR (B3)



| Code    | Ref. | Ø     | Ch | Ch1 | L  | I    |
|---------|------|-------|----|-----|----|------|
| 2203001 | B3   | 4/2   | 10 | 10  | 35 | 12.0 |
| 2203002 | B3   | 6/4   | 12 | 12  | 36 | 9.0  |
| 2203003 | B3   | 8/6   | 14 | 14  | 39 | 12.0 |
| 2203004 | B3   | 10/8  | 17 | 19  | 50 | 13.0 |
| 2203005 | B3   | 12/10 | 19 | 22  | 50 | 14.0 |
| 2203006 | B3   | 15/12 | 24 | 27  | 53 | 16.0 |

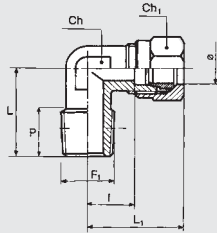
## BULKHEAD CONNECTOR (B4)



| Code    | Ref. | Ø     | Ch | Ch1 | L    | I    |
|---------|------|-------|----|-----|------|------|
| 2204001 | B4   | 6/4   | 14 | 12  | 53.0 | 26   |
| 2204002 | B4   | 8/6   | 16 | 14  | 56.0 | 29   |
| 2204003 | B4   | 10/8  | 19 | 19  | 66.5 | 29.5 |
| 2204004 | B4   | 12/10 | 22 | 22  | 67.0 | 31   |
| 2204005 | B4   | 15/12 | 25 | 27  | 73.5 | 36.5 |

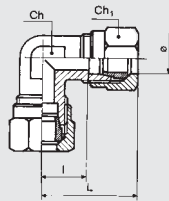


**ELBOW, MALE (B5)**



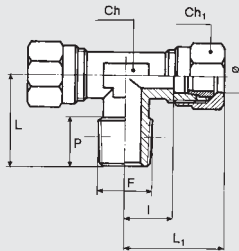
| Code    | Ref. | Ø     | F1  | Ch | Ch1 | P    | L    | L1   | I    |
|---------|------|-------|-----|----|-----|------|------|------|------|
| 2205001 | B5   | 4/2   | 1/8 | 9  | 10  | 8.0  | 16.0 | 21.5 | 10.0 |
| 2205002 | B5   | 6/4   | 1/8 | 9  | 12  | 8.0  | 16.0 | 22.0 | 8.5  |
| 2205003 | B5   | 6/4   | 1/4 | 11 | 12  | 11.0 | 20.0 | 23.5 | 10.0 |
| 2205004 | B5   | 8/6   | 1/8 | 11 | 14  | 8.0  | 17.0 | 24.0 | 10.5 |
| 2205005 | B5   | 8/6   | 1/4 | 11 | 14  | 11.0 | 20.0 | 24.0 | 10.5 |
| 2205006 | B5   | 8/6   | 3/8 | 13 | 14  | 12.0 | 23.5 | 27.0 | 13.5 |
| 2205007 | B5   | 10/8  | 1/4 | 13 | 19  | 11.0 | 22.5 | 32.0 | 13.5 |
| 2205008 | B5   | 10/8  | 3/8 | 13 | 19  | 12.0 | 23.5 | 32.0 | 13.5 |
| 2205009 | B5   | 10/8  | 1/2 | 20 | 19  | 13.0 | 30.0 | 39.0 | 20.5 |
| 2205010 | B5   | 12/10 | 3/8 | 15 | 22  | 11.5 | 24.0 | 33.5 | 15.5 |
| 2205011 | B5   | 12/10 | 1/2 | 20 | 22  | 13.0 | 30.0 | 38.0 | 20.0 |
| 2205012 | B5   | 15/12 | 1/2 | 20 | 27  | 13.0 | 30.0 | 38.5 | 20.0 |

**ELBOW, FEMALE (B6)**



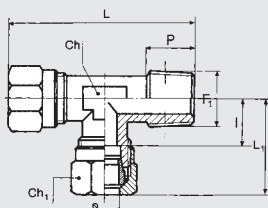
| Code    | Ref. | Ø     | Ch | Ch1 | L    | I    |
|---------|------|-------|----|-----|------|------|
| 2206001 | B6   | 4/2   | 9  | 10  | 21.5 | 10.0 |
| 2206002 | B6   | 6/4   | 9  | 12  | 22.0 | 8.5  |
| 2206003 | B6   | 8/6   | 11 | 14  | 24.0 | 10.5 |
| 2206004 | B6   | 10/8  | 13 | 19  | 32.0 | 13.5 |
| 2206005 | B6   | 12/10 | 15 | 22  | 33.5 | 15.5 |
| 2206006 | B6   | 15/12 | 20 | 27  | 38.5 | 20.0 |

**TEE, CENTRAL MALE (B7)**



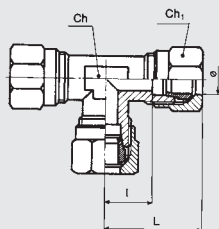
| Code    | Ref. | Ø     | F   | Ch | Ch1 | P    | L    | L1   | I    |
|---------|------|-------|-----|----|-----|------|------|------|------|
| 2207001 | B7   | 4/2   | 1/8 | 9  | 10  | 8.0  | 16.0 | 21.5 | 10.0 |
| 2207002 | B7   | 6/4   | 1/8 | 9  | 12  | 8.0  | 16.0 | 22.0 | 8.5  |
| 2207003 | B7   | 6/4   | 1/4 | 11 | 12  | 11.0 | 20.0 | 23.5 | 10.0 |
| 2207004 | B7   | 8/6   | 1/8 | 11 | 14  | 8.0  | 17.0 | 24.0 | 10.5 |
| 2207005 | B7   | 8/6   | 1/4 | 11 | 14  | 11.0 | 20.0 | 24.0 | 10.5 |
| 2207006 | B7   | 8/6   | 3/8 | 13 | 14  | 12.0 | 23.5 | 27.0 | 13.5 |
| 2207007 | B7   | 10/8  | 1/4 | 13 | 19  | 11.0 | 22.5 | 32.0 | 13.5 |
| 2207008 | B7   | 10/8  | 3/8 | 13 | 19  | 12.0 | 23.5 | 32.0 | 13.5 |
| 2207010 | B7   | 12/10 | 3/8 | 15 | 22  | 11.5 | 24.0 | 33.5 | 15.5 |
| 2207011 | B7   | 12/10 | 1/2 | 20 | 22  | 13.0 | 30.0 | 38.0 | 20.0 |
| 2207012 | B7   | 15/12 | 1/2 | 20 | 27  | 13.0 | 30.0 | 38.5 | 20.0 |

**TEE, LATERAL MALE (B8)**



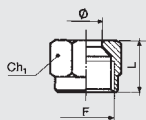
| Code    | Ref. | Ø     | F1  | Ch | Ch1 | P    | L    | L1   | I    |
|---------|------|-------|-----|----|-----|------|------|------|------|
| 2208000 | B8   | 4/2   | 1/8 | 9  | 10  | 8.0  | 37.5 | 21.5 | 10.0 |
| 2208001 | B8   | 6/4   | 1/8 | 9  | 12  | 8.0  | 38.5 | 22.0 | 8.5  |
| 2208002 | B8   | 6/4   | 1/4 | 11 | 12  | 11.0 | 43.5 | 23.5 | 10.0 |
| 2208003 | B8   | 8/6   | 1/8 | 11 | 14  | 8.0  | 41.0 | 24.0 | 10.5 |
| 2208004 | B8   | 8/6   | 1/4 | 11 | 14  | 11.0 | 44.0 | 24.0 | 10.5 |
| 2208005 | B8   | 8/6   | 3/8 | 13 | 14  | 12.0 | 50.5 | 27.0 | 13.5 |
| 2208006 | B8   | 10/8  | 1/4 | 13 | 19  | 11.0 | 54.5 | 32.0 | 13.5 |
| 2208007 | B8   | 10/8  | 3/8 | 13 | 19  | 12.0 | 55.5 | 32.0 | 13.5 |
| 2208009 | B8   | 12/10 | 3/8 | 15 | 22  | 11.5 | 57.5 | 33.5 | 15.5 |
| 2208010 | B8   | 12/10 | 1/2 | 20 | 22  | 13.0 | 68.0 | 38.0 | 20.0 |
| 2208011 | B8   | 15/12 | 1/2 | 20 | 27  | 13.0 | 68.5 | 38.5 | 20.0 |

## TEE, MALE (B9)



| Code    | Ref. | Ø     | Ch | Ch1 | L    | I    |
|---------|------|-------|----|-----|------|------|
| 2209001 | B9   | 4/2   | 9  | 10  | 21.5 | 10.0 |
| 2209002 | B9   | 6/4   | 9  | 12  | 22.0 | 8.5  |
| 2209003 | B9   | 8/6   | 11 | 14  | 24.0 | 10.5 |
| 2209004 | B9   | 10/8  | 13 | 19  | 32.0 | 13.5 |
| 2209005 | B9   | 12/10 | 15 | 22  | 33.5 | 15.5 |
| 2209006 | B9   | 15/12 | 20 | 27  | 38.5 | 20.0 |

## NUT (B10)



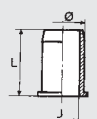
| Code    | Ref. | Ø     | Ch1 | L    | F       |
|---------|------|-------|-----|------|---------|
| 2210001 | B10  | 4/2   | 10  | 11.0 | M8x1    |
| 2210002 | B10  | 6/4   | 12  | 11.5 | M10x1   |
| 2210003 | B10  | 8/6   | 14  | 13.0 | M12x1   |
| 2210004 | B10  | 10/8  | 19  | 15.5 | M16x1.5 |
| 2210005 | B10  | 12/10 | 22  | 15.5 | M18x1.5 |
| 2210006 | B10  | 15/12 | 27  | 17.0 | M22x1.5 |

## OLIVE (B11)



| Code    | Ref. | Ø     | L  |
|---------|------|-------|----|
| 2211001 | B11  | 4/2   | 6  |
| 2211002 | B11  | 6/4   | 7  |
| 2211003 | B11  | 8/6   | 7  |
| 2211004 | B11  | 10/8  | 10 |
| 2211005 | B11  | 12/10 | 10 |
| 2211006 | B11  | 15/12 | 10 |

## INTERNAL BUSH (B12)



| Code    | Ref. | Ø     | J  | L    |
|---------|------|-------|----|------|
| 2212001 | B12  | 6/4   | 3  | 12.0 |
| 2212002 | B12  | 8/6   | 5  | 14.0 |
| 2212003 | B12  | 10/8  | 7  | 15.0 |
| 2212004 | B12  | 12/10 | 9  | 16.0 |
| 2212005 | B12  | 15/12 | 11 | 17.0 |

## TAPERED THREAD FITTINGS SERIES B WITH PTFE

Metal Work can supply fittings with a tapered thread coated in polytetrafluorethylene. This system provides the pneumatic seal between the fitting and the female thread. It is therefore not necessary to add other sealing systems during assembly, such as adhesives or Teflon tape. This significantly reduces assembly times. The physical and technical features of the material used ensure that the properties are maintained through time and in a wide range of operating temperatures. This coating can be used with series B bicone fittings, types B1, B5, B7 and B8 that have a 1/8" to 1/2" gas taper thread.

## TECHNICAL DATA

|                            |    |               |
|----------------------------|----|---------------|
| Temperature range for PTFE | °C | - 45 to + 80  |
|                            | °F | - 49 to + 176 |

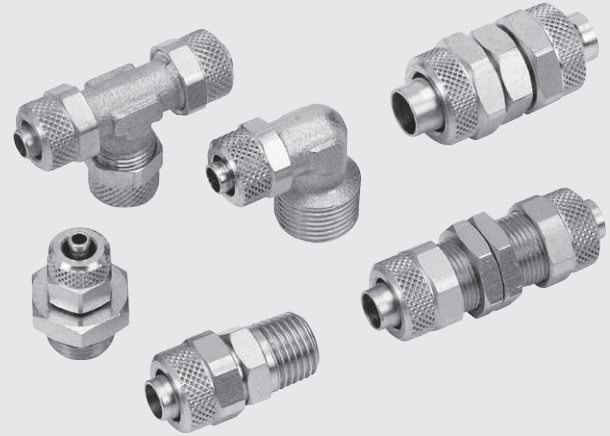
## KEY TO CODES

Fittings with a PTFE thread have the same code as the standard fitting, with the addition of the suffix T. For example B1 6/4 1/8 fitting has code 2201002, so the PTFE version has code 2201002T.

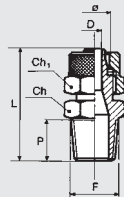
# QUICK FITTINGS SERIES C



- Body: OT58 brass
- Maximum pressure 261 psi, 1800 kPa 18 bar

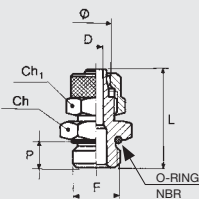


## STRAIGHT, MALE CONICAL (C1)



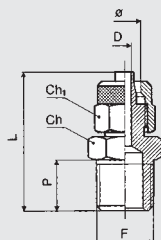
| Code    | Ref. | Ø       | F   | Ch | Ch1 | P    | L    | D    |
|---------|------|---------|-----|----|-----|------|------|------|
| 2301017 | C1   | 5/3     | 1/8 | 12 | 9   | 8.0  | 26.0 | 2.0  |
| 2301001 | C1   | 6/4     | 1/8 | 12 | 12  | 8.0  | 26.5 | 3.0  |
| 2301002 | C1   | 6/4     | 1/4 | 14 | 12  | 11.0 | 30.0 | 3.0  |
| 2301003 | C1   | 8/6     | 1/8 | 12 | 14  | 8.0  | 26.5 | 5.0  |
| 2301004 | C1   | 8/6     | 1/4 | 14 | 14  | 11.0 | 30.0 | 5.0  |
| 2301005 | C1   | 8/6     | 3/8 | 17 | 14  | 11.5 | 31.0 | 5.0  |
| 2301020 | C1   | 10/8    | 1/8 | 14 | 16  | 8.0  | 29.0 | 5.0  |
| 2301006 | C1   | 10/8    | 1/4 | 14 | 16  | 11.0 | 32.0 | 6.8  |
| 2301007 | C1   | 10/8    | 3/8 | 17 | 16  | 11.5 | 33.0 | 6.8  |
| 2301008 | C1   | 10/8    | 1/2 | 22 | 16  | 14.0 | 36.0 | 6.8  |
| 2301009 | C1   | 12/10   | 3/8 | 17 | 19  | 11.5 | 35.0 | 8.5  |
| 2301010 | C1   | 12/10   | 1/2 | 22 | 19  | 14.0 | 38.0 | 8.5  |
| 2301015 | C1   | 15/12.5 | 1/2 | 22 | 22  | 14.0 | 39.5 | 11.0 |

## STRAIGHT, MALE PARALLEL WITH O-RING (C1/Z)



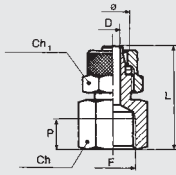
| Code    | Ref. | Ø     | F   | Ch | Ch1 | P    | L    | D   | O ring |
|---------|------|-------|-----|----|-----|------|------|-----|--------|
| 2351001 | C1/Z | 4/2   | M5  | 9  | 9   | 4.0  | 23.0 | 1.5 | 4x1.5  |
| 2351002 | C1/Z | 6/4   | M5  | 9  | 9   | 4.0  | 23.0 | 2.3 | 4x1.5  |
| 2351003 | C1/Z | 6/4   | 1/8 | 13 | 12  | 6.0  | 25.0 | 3.0 | 2031   |
| 2351004 | C1/Z | 6/4   | 1/4 | 16 | 12  | 8.0  | 27.0 | 3.0 | 2043   |
| 2351005 | C1/Z | 8/6   | 1/8 | 14 | 14  | 6.0  | 25.0 | 5.0 | 2031   |
| 2351006 | C1/Z | 8/6   | 1/4 | 16 | 14  | 8.0  | 27.0 | 5.0 | 2043   |
| 2351007 | C1/Z | 8/6   | 3/8 | 19 | 14  | 9.0  | 29.0 | 5.0 | 2056   |
| 2351008 | C1/Z | 10/8  | 1/4 | 16 | 16  | 8.0  | 29.0 | 6.8 | 2043   |
| 2351009 | C1/Z | 10/8  | 3/8 | 19 | 16  | 9.0  | 31.0 | 6.8 | 2056   |
| 2351010 | C1/Z | 10/8  | 1/2 | 24 | 16  | 11.0 | 33.0 | 6.8 | 3068   |
| 2351011 | C1/Z | 12/10 | 3/8 | 19 | 19  | 9.0  | 33.0 | 8.5 | 2056   |
| 2351012 | C1/Z | 12/10 | 1/2 | 24 | 19  | 11.0 | 35.0 | 8.5 | 3068   |

## STRAIGHT, MALE METRIC THREAD (C1/C)



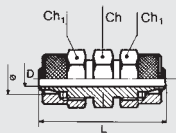
| Code    | Ref. | Ø   | F       | Ch | Ch1 | P | L  | D |
|---------|------|-----|---------|----|-----|---|----|---|
| 2356001 | C1/C | 5/3 | M5      | 9  | 9   | 4 | 23 | 2 |
| 2356002 | C1/C | 6/4 | M6      | 9  | 9   | 5 | 24 | 3 |
| 2356003 | C1/C | 6/4 | M12x1.5 | 17 | 12  | 8 | 27 | 3 |
| 2356004 | C1/C | 6/4 | 3/8     | 19 | 12  | 9 | 27 | 3 |
| 2356005 | C1/C | 8/6 | M12x1.5 | 17 | 14  | 8 | 27 | 5 |

**STRAIGHT, FEMALE (C2)**



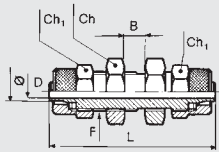
| Code    | Ref. | Ø    | F   | Ch | Ch1 | P    | L    | D   |
|---------|------|------|-----|----|-----|------|------|-----|
| 2302001 | C2   | 6/4  | 1/8 | 14 | 12  | 7.0  | 26.5 | 3.0 |
| 2302002 | C2   | 6/4  | 1/4 | 17 | 12  | 8.0  | 29.5 | 3.0 |
| 2302012 | C2   | 6/4  | 3/8 | 20 | 12  | 10.0 | 33.0 | 3.0 |
| 2302003 | C2   | 8/6  | 1/8 | 14 | 14  | 7.0  | 26.5 | 5.0 |
| 2302004 | C2   | 8/6  | 1/4 | 17 | 14  | 8.0  | 29.0 | 5.0 |
| 2302005 | C2   | 8/6  | 3/8 | 20 | 14  | 10.0 | 33.0 | 5.0 |
| 2302006 | C2   | 10/8 | 1/4 | 17 | 16  | 8.0  | 31.0 | 6.8 |
| 2302007 | C2   | 10/8 | 3/8 | 20 | 16  | 10.0 | 35.0 | 6.8 |
| 2302008 | C2   | 10/8 | 1/2 | 24 | 16  | 11.0 | 38.0 | 6.8 |

**STRAIGHT, CONNECTOR (C3)**



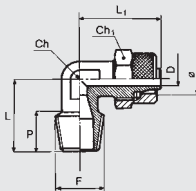
| Code    | Ref. | Ø     | Ch | Ch1 | L    | D   |
|---------|------|-------|----|-----|------|-----|
| 2303001 | C3   | 6/4   | 12 | 12  | 33.0 | 3.0 |
| 2303002 | C3   | 8/6   | 12 | 14  | 33.0 | 5.0 |
| 2303003 | C3   | 10/8  | 14 | 16  | 37.0 | 6.8 |
| 2303004 | C3   | 12/10 | 17 | 19  | 42.0 | 8.5 |

**BULKHEAD CONNECTOR (C4)**



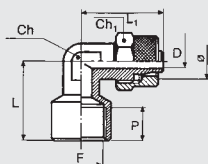
| Code    | Ref. | Ø     | Ch | Ch1 | L    | D   | B    | F     |
|---------|------|-------|----|-----|------|-----|------|-------|
| 2304001 | C4   | 6/4   | 14 | 12  | 47.0 | 3.0 | 11.0 | M10x1 |
| 2304002 | C4   | 8/6   | 16 | 14  | 48.0 | 5.0 | 12.0 | M12x1 |
| 2304003 | C4   | 10/8  | 17 | 16  | 49.0 | 6.8 | 9.0  | M14x1 |
| 2304004 | C4   | 12/10 | 19 | 19  | 53.0 | 8.5 | 9.0  | M16x1 |

**ELBOW, MALE CONICAL (C5)**

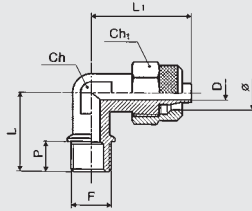


| Code    | Ref. | Ø       | F   | Ch | Ch1 | P    | L    | L1   | D    |
|---------|------|---------|-----|----|-----|------|------|------|------|
| 2305016 | C5   | 5/3     | 1/8 | 8  | 9   | 8.0  | 17.0 | 22.0 | 2.0  |
| 2305001 | C5   | 6/4     | 1/8 | 9  | 12  | 8.0  | 17.0 | 22.0 | 3.0  |
| 2305002 | C5   | 6/4     | 1/4 | 9  | 12  | 11.0 | 20.0 | 22.0 | 3.0  |
| 2305003 | C5   | 8/6     | 1/8 | 12 | 14  | 8.0  | 17.0 | 22.0 | 5.0  |
| 2305004 | C5   | 8/6     | 1/4 | 12 | 14  | 11.0 | 20.0 | 22.0 | 5.0  |
| 2305005 | C5   | 8/6     | 3/8 | 12 | 14  | 12.0 | 22.0 | 21.5 | 5.0  |
| 2305006 | C5   | 10/8    | 1/4 | 12 | 16  | 11.0 | 20.5 | 25.0 | 6.8  |
| 2305007 | C5   | 10/8    | 3/8 | 12 | 16  | 12.0 | 21.5 | 25.0 | 6.8  |
| 2305008 | C5   | 10/8    | 1/2 | 17 | 16  | 14.0 | 26.0 | 28.5 | 6.8  |
| 2305009 | C5   | 12/10   | 3/8 | 17 | 19  | 12.0 | 24.0 | 31.0 | 8.5  |
| 2305010 | C5   | 12/10   | 1/2 | 17 | 19  | 14.0 | 26.0 | 31.0 | 8.5  |
| 2305017 | C5   | 15/12.5 | 1/2 | 17 | 22  | 14.0 | 28.0 | 32.8 | 10.7 |

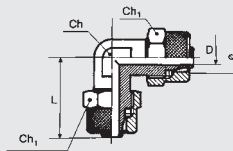
**ELBOW FEMALE (C5/F)**



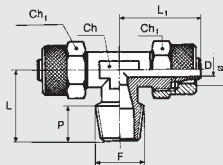
| Code    | Ref. | Ø   | F   | Ch | Ch1 | L    | L1   | D   | P   |
|---------|------|-----|-----|----|-----|------|------|-----|-----|
| 2352001 | C5/F | 6/4 | 1/8 | 9  | 12  | 21.0 | 22.0 | 3.0 | 7.0 |
| 2352002 | C5/F | 8/6 | 1/4 | 12 | 14  | 24.0 | 23.5 | 5.0 | 7.0 |

**ELBOW, MALE METRIC THREAD (C5/C)**


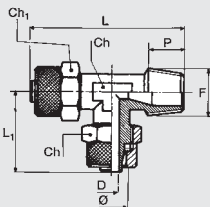
| Code    | Ref. | Ø   | F       | Ch | Ch1 | P | L  | L1   | D |
|---------|------|-----|---------|----|-----|---|----|------|---|
| 2357001 | C5/C | 6/4 | M12x1.5 | 10 | 12  | 9 | 22 | 22.5 | 3 |
| 2357002 | C5/C | 8/6 | M12x1.5 | 10 | 14  | 9 | 22 | 22.5 | 5 |

**ELBOW CONNECTOR (C6)**


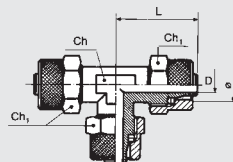
| Code    | Ref. | Ø       | Ch | Ch1 | L    | D    |
|---------|------|---------|----|-----|------|------|
| 2306001 | C6   | 6/4     | 9  | 12  | 22.0 | 3.0  |
| 2306002 | C6   | 8/6     | 12 | 14  | 22.0 | 5.0  |
| 2306003 | C6   | 10/8    | 12 | 16  | 25.0 | 6.8  |
| 2306004 | C6   | 12/10   | 17 | 19  | 31.0 | 8.5  |
| 2306006 | C6   | 15/12.5 | 18 | 22  | 32.8 | 10.7 |

**TEE, CENTRAL MALE (C7)**


| Code    | Ref. | Ø       | F   | Ch | Ch1 | P    | L    | L1   | D    |
|---------|------|---------|-----|----|-----|------|------|------|------|
| 2307015 | C7   | 5/3     | 1/8 | 9  | 9   | 8.0  | 17.0 | 22.0 | 2.0  |
| 2307001 | C7   | 6/4     | 1/8 | 9  | 12  | 8.0  | 17.0 | 22.0 | 3.0  |
| 2307002 | C7   | 6/4     | 1/4 | 9  | 12  | 11.0 | 20.0 | 22.0 | 3.0  |
| 2307003 | C7   | 8/6     | 1/8 | 12 | 14  | 8.0  | 17.0 | 22.0 | 5.0  |
| 2307004 | C7   | 8/6     | 1/4 | 12 | 14  | 11.0 | 20.0 | 22.0 | 5.0  |
| 2307005 | C7   | 8/6     | 3/8 | 12 | 14  | 12.0 | 22.0 | 23.0 | 5.0  |
| 2307006 | C7   | 10/8    | 1/4 | 12 | 16  | 11.0 | 21.0 | 25.0 | 6.8  |
| 2307007 | C7   | 10/8    | 3/8 | 12 | 16  | 12.0 | 22.0 | 25.0 | 6.8  |
| 2307008 | C7   | 10/8    | 1/2 | 17 | 16  | 14.0 | 26.0 | 28.5 | 6.8  |
| 2307009 | C7   | 12/10   | 3/8 | 17 | 19  | 12.0 | 24.0 | 31.0 | 8.5  |
| 2307010 | C7   | 12/10   | 1/2 | 17 | 19  | 14.0 | 26.0 | 31.0 | 8.5  |
| 2307016 | C7   | 15/12.5 | 1/2 | 18 | 22  | 14.0 | 28.0 | 32.8 | 10.7 |

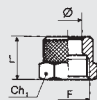
**TEE, LATERAL MALE (C8)**


| Code    | Ref. | Ø     | F   | Ch | Ch1 | P    | L    | L1   | D   |
|---------|------|-------|-----|----|-----|------|------|------|-----|
| 2308012 | C8   | 5/3   | 1/8 | 9  | 9   | 8.0  | 39.0 | 22.0 | 2.0 |
| 2308001 | C8   | 6/4   | 1/8 | 9  | 12  | 8.0  | 39.0 | 22.0 | 3.0 |
| 2308002 | C8   | 6/4   | 1/4 | 9  | 12  | 11.0 | 42.0 | 22.0 | 3.0 |
| 2308003 | C8   | 8/6   | 1/8 | 12 | 14  | 8.0  | 39.0 | 22.0 | 5.0 |
| 2308004 | C8   | 8/6   | 1/4 | 12 | 14  | 11.0 | 42.0 | 22.0 | 5.0 |
| 2308005 | C8   | 8/6   | 3/8 | 12 | 14  | 12.5 | 45.0 | 23.0 | 5.0 |
| 2308006 | C8   | 10/8  | 1/4 | 12 | 16  | 11.5 | 46.0 | 25.0 | 6.8 |
| 2308007 | C8   | 10/8  | 3/8 | 12 | 16  | 12.5 | 47.0 | 25.0 | 6.8 |
| 2308008 | C8   | 10/8  | 1/2 | 17 | 16  | 13.5 | 54.5 | 28.5 | 6.8 |
| 2308009 | C8   | 12/10 | 3/8 | 17 | 19  | 11.5 | 55.0 | 31.0 | 8.5 |
| 2308010 | C8   | 12/10 | 1/2 | 17 | 19  | 13.5 | 57.0 | 31.0 | 8.5 |

**TEE CONNECTOR (C9)**


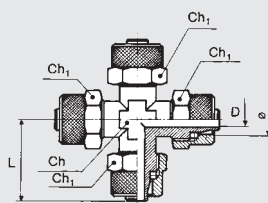
| Code    | Ref. | Ø       | Ch | Ch1 | L    | D    |
|---------|------|---------|----|-----|------|------|
| 2309001 | C9   | 6/4     | 9  | 12  | 22.0 | 3.0  |
| 2309002 | C9   | 8/6     | 12 | 14  | 22.0 | 5.0  |
| 2309003 | C9   | 10/8    | 12 | 16  | 25.0 | 6.8  |
| 2309004 | C9   | 12/10   | 17 | 19  | 31.0 | 8.5  |
| 2309007 | C9   | 15/12.5 | 18 | 22  | 32.8 | 10.7 |

## NUT (C10)



| Code    | Ref. | Ø       | F      | Ch1 | L    |
|---------|------|---------|--------|-----|------|
| 2310001 | C10  | 4/2     | M7x0.5 | 9   | 9.0  |
| 2310009 | C10  | 5/3     | M7x0.5 | 9   | 9.0  |
| 2310002 | C10  | 6/4- M5 | M8x0.5 | 9   | 9.0  |
| 2310003 | C10  | 6/4     | M10x1  | 12  | 11.0 |
| 2310004 | C10  | 8/6     | M12x1  | 14  | 11.0 |
| 2310005 | C10  | 10/8    | M14x1  | 16  | 12.0 |
| 2310006 | C10  | 12/10   | M16x1  | 19  | 12.0 |
| 2310011 | C10  | 15/12.5 | M20x1  | 22  | 16.0 |

## EQUAL CROSS CONNECTOR (C11)



| Code    | Ref. | Ø    | Ch | Ch1 | L    | D   |
|---------|------|------|----|-----|------|-----|
| 2311001 | C11  | 6/4  | 10 | 12  | 21.5 | 3.0 |
| 2311002 | C11  | 8/6  | 10 | 14  | 22.0 | 5.0 |
| 2311003 | C11  | 10/8 | 12 | 16  | 24.5 | 6.8 |

## TAPERED THREAD FITTINGS SERIES C WITH PTFE

Metal Work can supply fittings with a tapered thread coated in polytetrafluorethylene. This system provides the pneumatic seal between the fitting and the female thread. It is therefore not necessary to add other sealing systems during assembly, such as adhesives or Teflon tape. This significantly reduces assembly times. The physical and technical features of the material used ensure that the properties are maintained through time and in a wide range of operating temperatures. This coating can be used with series C push-in fittings, types C1, C5, C7 and C8 that have a 1/8" to 1/2" gas taper thread.

## TECHNICAL DATA

|                            |    |               |
|----------------------------|----|---------------|
| Temperature range for PTFE | °C | - 45 to + 80  |
|                            | °F | - 49 to + 176 |

## KEY TO CODES

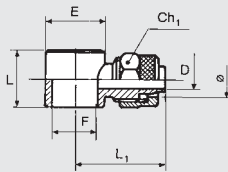
Fittings with a PTFE thread have the same code as the standard fitting, with the addition of the suffix **T**. For example C1 6/4 1/8 fitting has code **2301001**, so the PTFE version has code **2301001T**.

# BANJO FITTINGS SERIES D

- Body: OT58 brass
- Maximum pressure 261 psi, 1800 kPa 18 bar

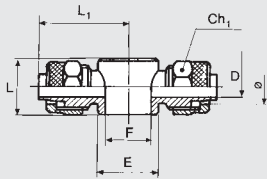


## SINGLE BANJO BODY (D5)



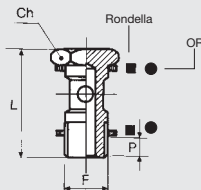
| Code    | Ref. | Ø     | F   | Ch1 | L    | L1   | D   | E    |
|---------|------|-------|-----|-----|------|------|-----|------|
| 2405000 | D5   | 4/2   | M5  | 9   | 9.0  | 20.5 | 1.5 | 9.5  |
| 2405013 | D5   | 5/3   | 1/8 | 9   | 15.0 | 24.3 | 2.0 | 14.0 |
| 2405018 | D5   | 5/3   | M5  | 9   | 9.0  | 20.7 | 2.0 | 9.5  |
| 2405001 | D5   | 6/4   | M5  | 9   | 9.0  | 20.5 | 3.0 | 9.5  |
| 2405002 | D5   | 6/4   | 1/8 | 12  | 15.0 | 24.5 | 3.0 | 14.0 |
| 2405003 | D5   | 6/4   | 1/4 | 12  | 17.0 | 26.5 | 3.0 | 18.0 |
| 2405005 | D5   | 8/6   | 1/8 | 14  | 15.0 | 24.0 | 5.0 | 14.0 |
| 2405006 | D5   | 8/6   | 1/4 | 14  | 17.0 | 26.0 | 5.0 | 18.0 |
| 2405007 | D5   | 8/6   | 3/8 | 14  | 20.0 | 28.5 | 5.0 | 21.0 |
| 2405009 | D5   | 10/8  | 1/4 | 16  | 17.0 | 28.0 | 6.8 | 18.0 |
| 2405010 | D5   | 10/8  | 3/8 | 16  | 20.0 | 29.0 | 6.8 | 21.0 |
| 2405011 | D5   | 10/8  | 1/2 | 16  | 24.0 | 30.5 | 6.8 | 26.0 |
| 2405012 | D5   | 12/10 | 1/2 | 19  | 24.0 | 33.5 | 8.5 | 26.0 |
| 2405017 | D5   | 12/10 | 3/8 | 19  | 20.0 | 31.0 | 8.5 | 21.0 |

## DOUBLE BANJO BODY (D6)



| Code    | Ref. | Ø     | F   | Ch1 | L    | L1   | D   | E    |
|---------|------|-------|-----|-----|------|------|-----|------|
| 2406001 | D6   | 6/4   | 1/8 | 12  | 15.0 | 24.5 | 3.0 | 14.0 |
| 2406002 | D6   | 6/4   | 1/4 | 12  | 17.0 | 26.5 | 3.0 | 18.0 |
| 2406004 | D6   | 8/6   | 1/8 | 14  | 15.0 | 24.0 | 5.0 | 14.0 |
| 2406005 | D6   | 8/6   | 1/4 | 14  | 17.0 | 26.0 | 5.0 | 18.0 |
| 2406006 | D6   | 8/6   | 3/8 | 14  | 20.0 | 28.5 | 5.0 | 21.0 |
| 2406008 | D6   | 10/8  | 1/4 | 16  | 17.0 | 28.0 | 6.8 | 18.0 |
| 2406009 | D6   | 10/8  | 3/8 | 16  | 20.0 | 29.0 | 6.8 | 21.0 |
| 2406010 | D6   | 10/8  | 1/2 | 16  | 24.0 | 30.5 | 6.8 | 26.0 |
| 2406011 | D6   | 12/10 | 1/2 | 19  | 24.0 | 33.5 | 8.5 | 26.0 |

## BANJO STEM SINGLE (D7)

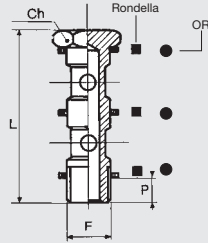


| Code  | Ref. | F       | Ch | L    | P  |
|---|------|---------|----|------|----|
| <b>Version with washer D11 for models R13-R14-D12-D17-D5-D6</b> |      |         |    |      |    |
| 2407001   | D7   | M5      | 8  | 18.0 | 3  |
| 2407002   | D7   | 1/8     | 14 | 28.0 | 6  |
| 2407003   | D7   | 1/4     | 17 | 33.0 | 8  |
| 2407004   | D7   | 3/8     | 20 | 37.0 | 9  |
| 2407005   | D7   | 1/2     | 27 | 42.0 | 10 |
| 2407006   | D7   | M12x1.5 | 17 | 33.0 | 8  |

### Version with O-ring for models R28-R29

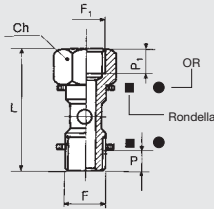
|         |            |     |    |      |   |
|---------|------------|-----|----|------|---|
| 2407102 | D7 with OR | 1/8 | 14 | 28.0 | 6 |
| 2407103 | D7 with OR | 1/4 | 17 | 33.0 | 8 |
| 2407104 | D7 with OR | 3/8 | 20 | 37.0 | 9 |

**BANJO STEM DOUBLE (D8)**



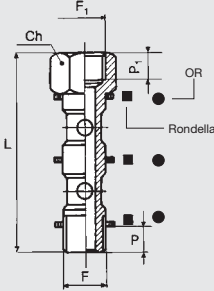
| Code  | Ref.       | F   | Ch | L    | P  |
|---|------------|-----|----|------|----|
| <b>Version with washer D11 for models R13-R14-D5-D6-D12-D17</b> |            |     |    |      |    |
| 2408001   | D8         | 1/8 | 14 | 44.5 | 6  |
| 2408002   | D8         | 1/4 | 17 | 51.5 | 8  |
| 2408003   | D8         | 3/8 | 20 | 58.5 | 9  |
| 2408004   | D8         | 1/2 | 27 | 67.5 | 10 |
| <b>Version with O-ring for models R28-R29</b>                   |            |     |    |      |    |
| 2408102   | D8 with OR | 1/8 | 14 | 44.5 | 6  |
| 2408103   | D8 with OR | 1/4 | 17 | 51.5 | 8  |
| 2408104   | D8 with OR | 3/8 | 20 | 58.5 | 9  |

**BANJO PASSING TROUGH SINGLE (D9)**



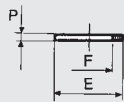
| Code  | Ref. | F   | F1  | Ch | L    | P  | P1 |
|---|------|-----|-----|----|------|----|----|
| <b>Version with washer D11 for models R13-R14-D5-D6-D12-D17</b> |      |     |     |    |      |    |    |
| 2409001   | D9   | 1/8 | 1/8 | 14 | 36.5 | 6  | 7  |
| 2409002   | D9   | 1/4 | 1/4 | 17 | 42.5 | 8  | 8  |
| 2409003   | D9   | 3/8 | 3/8 | 20 | 49.5 | 9  | 10 |
| 2409004   | D9   | 1/2 | 1/2 | 27 | 56.5 | 10 | 11 |
| <b>Version with O-ring for models R28-R29</b>                   |      |     |     |    |      |    |    |
| 2409102   | D9   | 1/8 | 1/8 | 14 | 36.5 | 6  | 7  |
| 2409103   | D9   | 1/4 | 1/4 | 17 | 42.5 | 8  | 8  |
| 2409104   | D9   | 3/8 | 3/8 | 20 | 49.5 | 9  | 10 |

**BANJO PASSING TROUGH STEM DOUBLE (D10)**



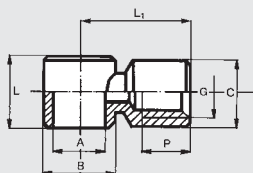
| Code  | Ref.        | F   | F1  | Ch | L    | P  | P1 |
|---|-------------|-----|-----|----|------|----|----|
| <b>Version with washer D11 for models R13-R14-D5-D6-D12-D17</b> |             |     |     |    |      |    |    |
| 2410001   | D10         | 1/8 | 1/8 | 14 | 53.0 | 6  | 7  |
| 2410002   | D10         | 1/4 | 1/4 | 17 | 61.0 | 8  | 8  |
| 2410003   | D10         | 3/8 | 3/8 | 20 | 71.0 | 9  | 10 |
| 2410004   | D10         | 1/2 | 1/2 | 27 | 82.0 | 10 | 11 |
| <b>Version with O-ring for models R28-R29</b>                   |             |     |     |    |      |    |    |
| 2410102   | D10 with OR | 1/8 | 1/8 | 14 | 53.0 | 6  | 7  |
| 2410103   | D10 with OR | 1/4 | 1/4 | 17 | 61.0 | 8  | 8  |
| 2410104   | D10 with OR | 3/8 | 3/8 | 20 | 71.0 | 9  | 10 |

**WASHER (D11)**



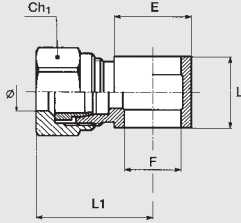
| Code    | Ref. | F   | E    | P           |
|---------|------|-----|------|-------------|
| 2411001 | D11  | M5  | 9    | 1.5 (nylon) |
| 2411002 | D11  | 1/8 | 13.8 | 1.5         |
| 2411003 | D11  | 1/4 | 17.8 | 1.5         |
| 2411004 | D11  | 3/8 | 21.0 | 1.5         |
| 2411005 | D11  | 1/2 | 26.0 | 1.5         |

**SINGLE BANJO PASSING TROUGH BODY (D12)**



| Code    | Ref. | A   | G   | B  | C    | L  | L1   | P  |
|---------|------|-----|-----|----|------|----|------|----|
| 2412001 | D12  | 1/8 | 1/8 | 14 | 13.5 | 15 | 21.5 | 7  |
| 2412002 | D12  | 1/4 | 1/4 | 18 | 17.0 | 17 | 25.5 | 8  |
| 2412003 | D12  | 3/8 | 3/8 | 21 | 20.5 | 20 | 31.0 | 10 |



**SINGLE BANJO WITH "B" INTERFACE (D17)**


| Code    | Ref. | Ø   | F   | Ch1 | L  | L1   | E  |
|---------|------|-----|-----|-----|----|------|----|
| 2417006 | D17  | 4/2 | 1/8 | 10  | 15 | 24.5 | 14 |
| 2417002 | D17  | 6/4 | 1/8 | 12  | 15 | 26.0 | 14 |
| 2417003 | D17  | 6/4 | 1/4 | 12  | 17 | 28.0 | 18 |
| 2417004 | D17  | 8/6 | 1/8 | 14  | 15 | 26.0 | 14 |
| 2417005 | D17  | 8/6 | 1/4 | 14  | 17 | 28.0 | 18 |

**NOTES**