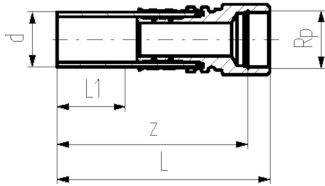




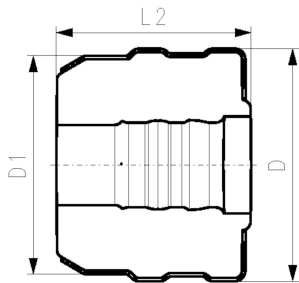
COOL-FIT 4.0 Adaptor fitting PE/stainless steel
With female thread Rp

Model:

- Spigot fitting PE100 SDR11, metric with free end
- Stainless steel 1.4404 / 316L with female thread Rp
- Gasket: O-ring EPDM
- Including Insulation half shells



d (mm)	Thread Type	Size (inch)	DN (mm)	SDR	PN (bar)	Code	Weight (kg)	D (mm)	D1 (mm)	L1 (mm)	L2 (mm)	z (mm)
32	Rp	½	25	11	16	738 943 008	0.247	104	90	36	101	118
32	Rp	¾	25	11	16	738 943 018	0.272	104	90	36	101	116
32	Rp	1	25	11	16	738 943 028	0.297	104	90	36	101	115
40	Rp	1 ¼	32	11	16	738 943 009	0.683	128	110	40	91	141
50	Rp	1 ½	40	11	16	738 943 010	0.734	138	110	44	96	128
63	Rp	2	50	11	16	738 943 011	1.244	149	125	48	103	140



The technical data are not binding. They neither constitute expressly warranted characteristics nor guaranteed properties nor a guaranteed durability. They are subject to modification. Our General Terms of Sale apply.

Georg Fischer Piping Systems Ltd, Postfach, CH-8201 Schaffhausen/Switzerland

Phone +41 -(0)52-631 1111

e-mail: info.ps@georgfischer.com

Internet: <http://www.gfps.com>