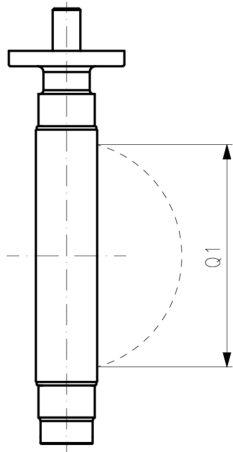




Metal - butterfly valve type 039M
Bare shaft metric DN350-1200

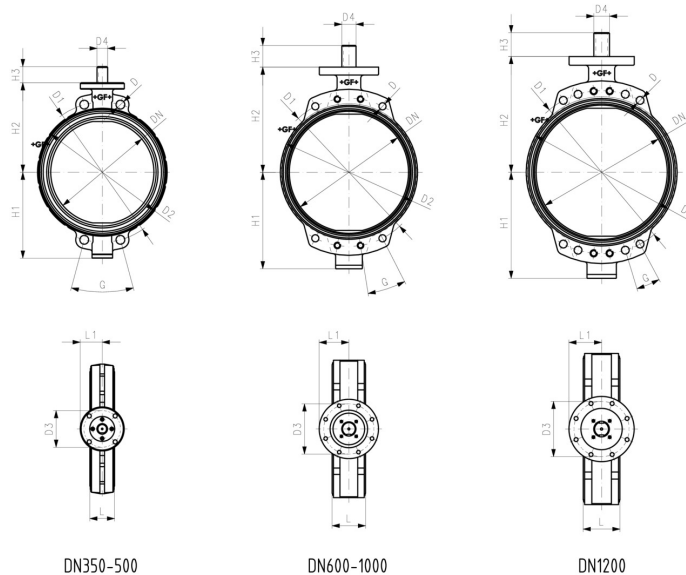
Model:

- Housing: Ductile Iron ASTM A 395, Epoxy coated
- Seatliner available in EPDM, FKM on request
- Disc available in Aluminium Bronze on request
- Shaft end: key way, parallel square available on request
- Top flange according to EN ISO 5211
- Up to DN 1200: Overall length according to EN 558, line 20, ISO 5752
- Connecting dimension: PN 16 or ASME B16.5 150 on request



d (mm)	DN (mm)	PN (bar)	kv-value ($\Delta p=1$ bar) (l/min)	Disc: ductile iron: EPOXY coated EPDM Code	Weight (kg)	Disc: stainless steel EPDM Code	Weight (kg)
355	350	10	143360	198 152 000	43.200	198 152 010	43.200
400	400	10	186700	198 152 001	65.200	198 152 011	65.200
450	450	10	258390	198 152 002	84.500	198 152 012	84.500
500	500	10	316730	198 152 003	119.000	198 152 013	119.000
630	600	10	431750	198 152 004	281.000	198 152 014	281.000
700	700	10	618333	198 152 005	414.000	198 152 015	414.000
800	800	10	675000	198 152 006	578.000	198 152 016	578.000
900	900	10	1005200	198 152 007	639.000	198 152 017	639.000
1000	1000	10	1306930	198 152 008	918.000	198 152 018	918.000
1200	1200	10	1907050	198 152 009	1760.000	198 152 019	1760.000

d (mm)	D (mm)	D1 (mm)	D2 (mm)	D3 (mm)	D4 (mm)	H1 (mm)	H2 (mm)	H3 (mm)	L (mm)	L1 (mm)	M (mm)	Q1 (mm)	N (mm)
355	21	460	442	125	36	291	307	55	78	75	20	332	16
400	25	515	193	140	42	325	342	65	102	88	24	382	16
450	25	565	544	140	48	357	387	65	113	88	24	432	20
500	25	620	601	140	48	381	425	65	126	88	24	478	20
630	28	725	695	254	72	488	532	110	146	150	27	585	20
700	28	840	798	254	72	506	573	110	175	150	27	683	24
800	31	950	908	254	72	578	650	110	215	150	30	755	24
900	31	1050	1004	254	98	643	707	110	246	150	30	852	28
1000	34	1160	1114	254	98	729	755	110	280	150	33	958	28
1200	37	1380	1330	298	120	855	900	130	360	195	36	1098	32



Data sheet

valid from: 10/21/20



The technical data are not binding. They neither constitute expressly warranted characteristics nor guaranteed properties nor a guaranteed durability. They are subject to modification. Our General Terms of Sale apply.

Georg Fischer Piping Systems Ltd, Postfach, CH-8201 Schaffhausen/Switzerland

Phone +41 -(0)52-631 1111

e-mail: info.ps@georgfischer.com

Internet: <http://www.gfps.com>