




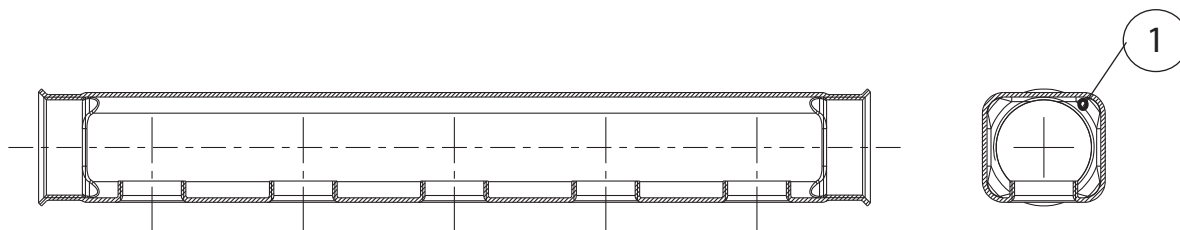
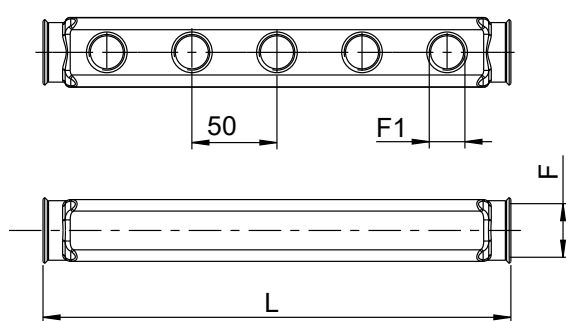
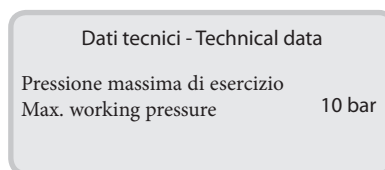
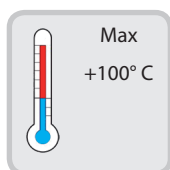


-  Collettore in acciaio inox AISI 304 1" - 1"1/4.  
Attacchi F 1/2".
-  AISI 304 stainless steel manifold 1" - 1"1/4.  
F 1/2" connections.
-  Verteiler aus rostfreiem Edelstahl AISI 304 mit 1" - 1" 1/4.  
nschlüsse IG mit Außengewinde 1/2".
-  Collecteur en acier inox AISI 304 1" - 1"1/4.  
Fixations F 1/2".
-  Коллектор из нержавеющей стали AISI 304, размеры 1" - 1"1/4.  
Соединения В 1/2".



N	DENOMINAZIONE PART NAME	MATERIALE MATERIAL	TRATTAMENTO TREATMENT
1	Collettore Manifold	Acciaio inox AISI 304 Stainless steel AISI 304	



Type	F	F1	L
2 vie	G 1"	1/2"	125
3 vie	G 1"	1/2"	175
4 vie	G 1"	1/2"	225
5 vie	G 1"	1/2"	255
6 vie	G 1"	1/2"	325
7 vie	G 1"	1/2"	355
8 vie	G 1"	1/2"	425
9 vie	G 1"	1/2"	475
10 vie	G 1"	1/2"	525
11 vie	G 1"	1/2"	575
12 vie	G 1"	1/2"	625
13 vie	G 1"	1/2"	675
6 vie	G 1"1/4	1/2"	325
7 vie	G 1"1/4	1/2"	375
8 vie	G 1"1/4	1/2"	425
9 vie	G 1"1/4	1/2"	475
10 vie	G 1"1/4	1/2"	525
11 vie	G 1"1/4	1/2"	575
12 vie	G 1"1/4	1/2"	625
13 vie	G 1"1/4	1/2"	675