



Backing flange PP-V metric
For butt fusion systems metric

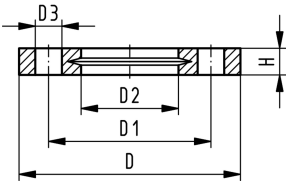
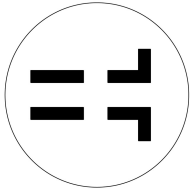
Model:

- Full-plastic flange PP-GF (30 % glass-fibre reinforced)
- Connecting dimension: ISO 7005, EN 1092, BS 4504, DIN 2501
- **Bolt circle PN 10**

AL: number of holes

¹⁾ Suitable for socket- and butt fusion systems

²⁾ Combined version, metric-ANSI



d	DN	PN	Code	SP	Weight	D	D1	D2	D3	H max.	H	AL	SC
(mm)	(mm)	(bar)			(kg)	(mm)	(mm)	(mm)	(mm)	(mm)	(mm)		
90	80	16	727 700 513	15	0.544	200	160	108	18	27	27	8	M16
110	100	16	727 700 514	13	0.643	220	180	128	18	28	28	8	M16
125	100	16	727 700 515	13	0.635	220	180	135	18	28	28	8	M16
140	125	16	727 700 516	10	0.842	250	210	158	18	30	30	8	M16
180	150	16	727 700 518		1.200	285	240	188	22	32	32	8	M20
250	250	10	727 700 521		2.052	395	350	288	22	38	38	12	M20
280	250	10	727 700 522		1.700	395	350	294	22	38	38	12	M20
315	300	10	727 700 523		2.400	445	400	338	22	42	42	12	M20
355	350	10	727 700 524		4.440	515	460	376	22	46	46	16	M20
400	400	10	727 700 525		5.624	574	515	430	26	50	50	16	M24

The technical data are not binding. They neither constitute expressly warranted characteristics nor guaranteed properties nor a guaranteed durability. They are subject to modification. Our General Terms of Sale apply.

Georg Fischer Piping Systems Ltd, Postfach, CH-8201 Schaffhausen/Switzerland

Phone +41 -(0)52-631 1111

e-mail: info.ps@georgfischer.com

Internet: <http://www.gfps.com>