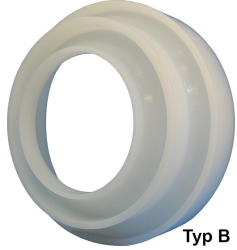


Typ A



Typ B

SYGEF Plus reducer SDR21/PN16

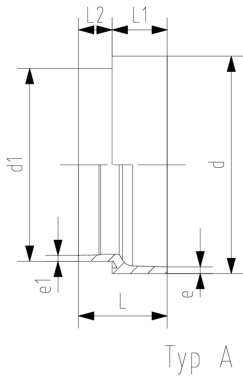
Model:

- Material: PVDF-HP

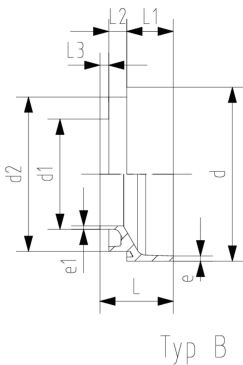
Note:

for Typ B, clamping for welding spigot d1 needs to be done on diameter d2

d - d1 (mm)	PN (bar)	fusion d - d1	Code	e (mm)	e1 (mm)	L (mm)	L1 (mm)	L2 (mm)	L3 (mm)	Type	d2 (mm)
250 - 160	16	IR	735 908 628	11.9	7.7	100	42	33	10	B	225
250 - 225	16	IR	735 908 629	11.9	10.8	90	42	33		A	
280 - 160	16	IR	735 908 630	13.4	7.7	100	50	33	10	B	225
280 - 225	16	IR	735 908 631	13.4	10.8	90	50	33		A	
315 - 160	16	IR	735 908 632	15.0	7.7	115	50	33	10	B	225
315 - 225	16	IR	735 908 633	15.0	10.8	105	50	33		A	



Typ A



Typ B

The technical data are not binding. They neither constitute expressly warranted characteristics nor guaranteed properties nor a guaranteed durability. They are subject to modification. Our General Terms of Sale apply.

Georg Fischer Piping Systems Ltd, Postfach, CH-8201 Schaffhausen/Switzerland

Phone +41 -(0)52-631 1111

e-mail: info.ps@georgfischer.com

Internet: <http://www.gfps.com>