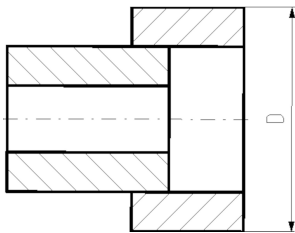
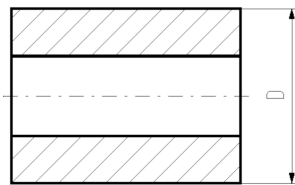
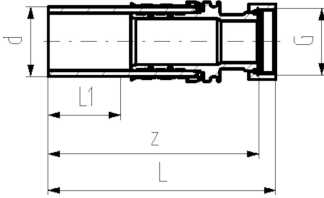




**COOL-FIT 2.0 Adaptor fitting PE/stainless steel**  
**With loose union nut G**

**Model:**

- Spigot fitting PE100 SDR11, metric with free end
- Stainless steel 1.4404 / 316L with female thread G
- Including flat seal EPDM
- Including Insulation made from NBR foam



d (mm)	Thread Type	Size (inch)	DN (mm)	SDR	Code	Weight (kg)	D (mm)	L (mm)	L1 (mm)	z (mm)
32	G	½	25	11	<b>738 944 308</b>	0.204	70	135	36	126
32	G	¾	25	11	<b>738 944 318</b>	0.219	70	135	36	129
32	G	1	25	11	<b>738 944 328</b>	0.317	70	135	36	129
32	G	1 ¼	25	11	<b>738 944 338</b>	0.317	108	137	36	131
40	G	1 ¼	32	11	<b>738 944 309</b>	0.538	78	155	40	148
40	G	1 ½	32	11	<b>738 944 319</b>	0.615	116	157	40	148
40	G	2	32	11	<b>738 944 329</b>	0.815	116	166	40	150
50	G	1 ½	40	11	<b>738 944 310</b>	0.758	88	164	44	154
50	G	1 ¾	40	11	<b>738 944 320</b>	0.827	88	164	44	155
50	G	2	40	11	<b>738 944 330</b>	1.048	126	178	44	162
50	G	2 ¼	40	11	<b>738 944 340</b>	0.866	126	148	44	134
63	G	2	50	11	<b>738 944 311</b>	1.237	101	186	48	170
63	G	2 ¾	50	11	<b>738 944 321</b>	1.344	139	178	48	168
63	G	2 ¾	50	11	<b>738 944 331</b>	1.230	139	157	48	141

The technical data are not binding. They neither constitute expressly warranted characteristics nor guaranteed properties nor a guaranteed durability. They are subject to modification. Our General Terms of Sale apply.

Georg Fischer Piping Systems Ltd, Postfach, CH-8201 Schaffhausen/Switzerland

Phone +41 -(0)52-631 1111

e-mail: [info.ps@georgfischer.com](mailto:info.ps@georgfischer.com)

Internet: <http://www.gfps.com>