

# 10-mm SOLENOID VALVES SERIES PLT-10



PLT-10 solenoid valves are the latest development in modern pneumatic design, where the main trends focus on miniaturisation, enhanced performance, reduced power and reliability. Numerous versions are available, all with an ISO 15218 pneumatic interface. The power required to operate the PLT-10 has been greatly reduced, ranging from 0.3 to 0.8 Watts. It is available with a LED indicating when it is active. Monostable manual control is also possible. None of the versions will get damaged if the polarity is accidentally inverted.

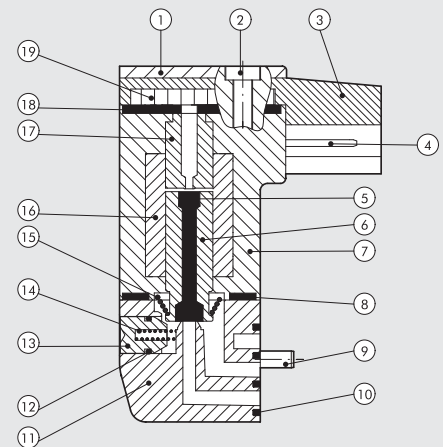


## TECHNICAL DATA

Type		3/2 NC
Operating temperature range (Te)	°C	5 to 50
Fluid temperature (Tg)	°C	5 to 50
Fluid		Filtered, lubricated or unlubricated air
Operating life		Over 50 million cycles
Weight	g	12
Voltage tolerance	ΔV	± 10 %
Max operating frequency	f	30 Hz
Switching factor	ED	100 %
Insulation class		F155
Index of protection		IP51
Power connection		PLUG IN

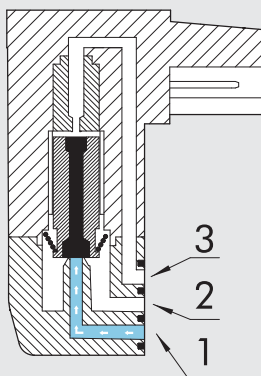
## COMPONENTS

- ① TRANSPARENT COVER: PA612-transparent
- ② ASSEMBLY SCREWS: galvanized steel
- ③ COVER: PA66
- ④ PIN
- ⑤ MOBILE CORE OVER-STAMPING: FKM/FPM
- ⑥ MOBILE CORE: AISI 403F
- ⑦ COIL OVER-STAMPING: PA66
- ⑧ BODY-COIL GASKET: NBR70
- ⑨ ASSEMBLY SCREWS: galvanized steel
- ⑩ BODY GASKET: NBR
- ⑪ BODY: PA66
- ⑫ MANUAL GASKET: NBR (only for version with manual operated)
- ⑬ MANUAL CONTROL: AISI 303 (only for version with manual operated)
- ⑭ MANUAL SPRING: AISI 302 (only for version with manual operated)
- ⑮ SPRING: AISI 302
- ⑯ WINDING: PPS - Copper wire
- ⑰ FIXED CORE: AISI 430F
- ⑱ COIL-COVER GASKET: NBR
- ⑲ ELECTRONIC BOARD (only for version with electronic board)

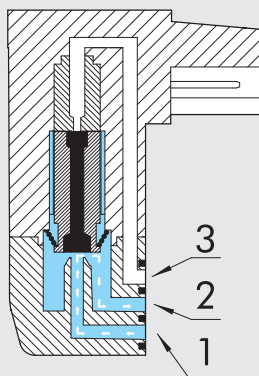


## OPERATING CHART

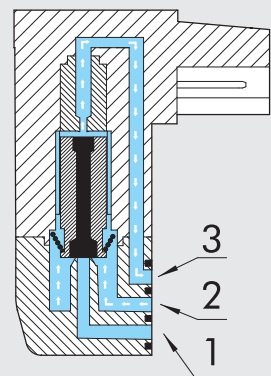
DE-ENERGIZED



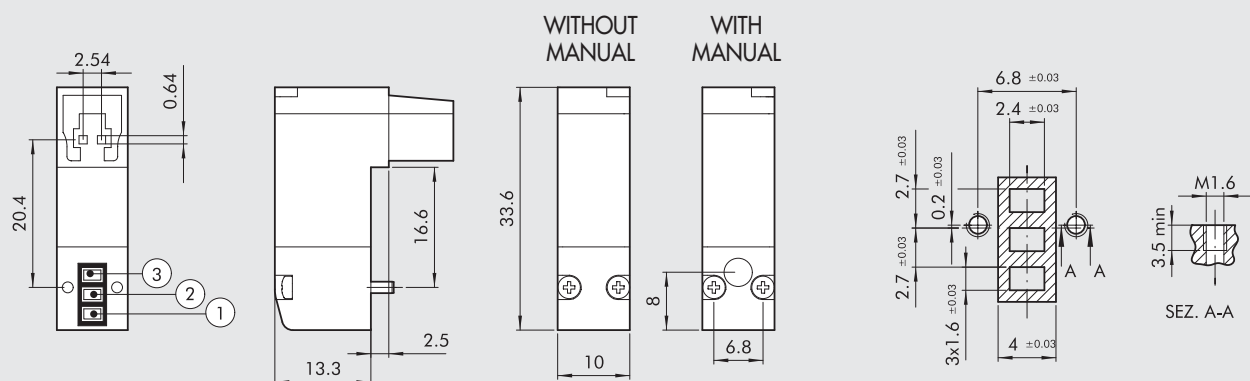
ENERGIZED



DE-ENERGIZED

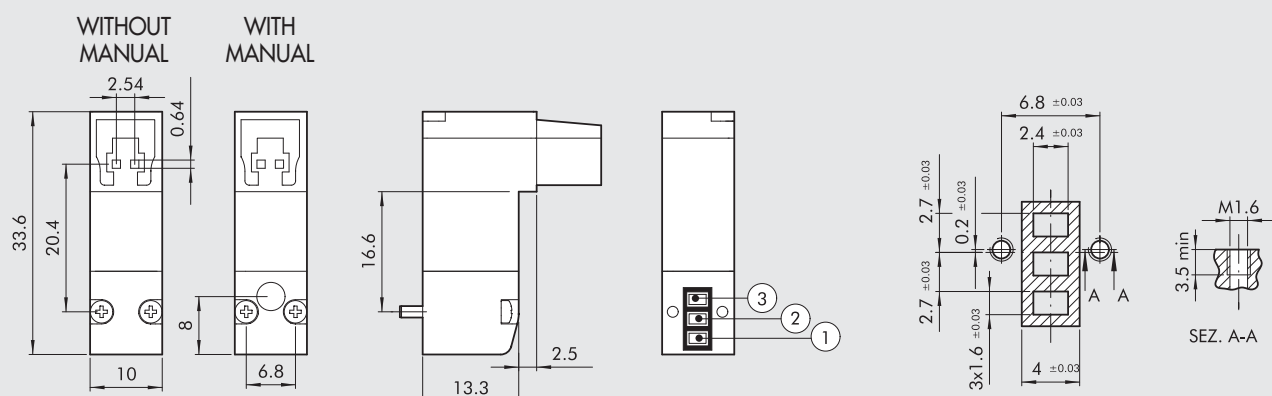


## PLT-10 WITH BASE AND CONNECTION ON THE SAME SIDE



Version (3/2 NC)	Code	Manual	Voltage [Volt]	Power [Watt]	Through Ø [mm]	Operating press. [bar]	Flow rate at 6 ΔP=1 bar [Nl/min]	Tmax coil a 24VDC Te 20°C a ED100% [°C]	Weight [g]
Without LED	722113330000	without	12 VDC	0.7	0.6	3 ÷ 7	9	93	12
	722113330100	with	12 VDC	0.7	0.6	3 ÷ 7	9	93	12
	722113340000	without	24 VDC	0.7	0.6	3 ÷ 7	9	93	12
	722113340100	with	24 VDC	0.7	0.6	3 ÷ 7	9	93	12
With LED	722113531000	without	12 VDC	0.8	0.6	3 ÷ 7	9	93	12
	722113531100	with	12 VDC	0.8	0.6	3 ÷ 7	9	93	12
	722113541000	without	24 VDC	0.8	0.6	3 ÷ 7	9	93	12
	722113541100	with	24 VDC	0.8	0.6	3 ÷ 7	9	93	12
SPEED-UP e LED	722116841000	without	24 VDC	3/0.3	1.2	2 ÷ 7	16	51	12
	722116841100	with	24 VDC	3/0.3	1.2	2 ÷ 7	16	51	12
	722116941000	without	24 VDC	4.2/0.7	1.2	2 ÷ 7	30	51	12
	722116941100	with	24 VDC	4.2/0.7	1.2	2 ÷ 7	30	51	12

## PLT-10 WITH BASE AND CONNECTION ON OPPOSITE SIDES



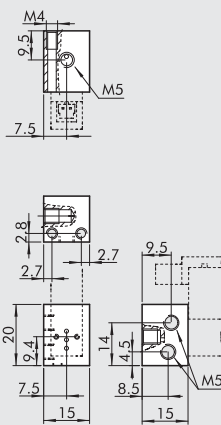
Version (3/2 NC)	Code	Manuale	Voltage [Volt]	Power [Watt]	Through Ø [mm]	Operating press. [bar]	Flow rate at 6 ΔP=1 bar [Nl/min]	Tmax coil a 24VDC Te 20°C a ED100% [°C]	Weight [g]
Without LED	722213330000	without	12 VDC	0.7	0.6	3 ÷ 7	9	93	12
	722213330100	with	12 VDC	0.7	0.6	3 ÷ 7	9	93	12
	722213340000	without	24 VDC	0.7	0.6	3 ÷ 7	9	93	12
	722213340100	with	24 VDC	0.7	0.6	3 ÷ 7	9	93	12
With LED	722213531000	without	12 VDC	0.8	0.6	3 ÷ 7	9	93	12
	722213531100	with	12 VDC	0.8	0.6	3 ÷ 7	9	93	12
	722213541000	without	24 VDC	0.8	0.6	3 ÷ 7	9	93	12
	722213541100	with	24 VDC	0.8	0.6	3 ÷ 7	9	93	12
SPEED-UP e LED	722216841000	without	24 VDC	3/0.3	1.2	2 ÷ 7	16	51	12
	722216841100	with	24 VDC	3/0.3	1.2	2 ÷ 7	16	51	12
	722216941000	without	24 VDC	4.2/0.7	1.2	2 ÷ 7	30	51	12
	722216941100	with	24 VDC	4.2/0.7	1.2	2 ÷ 7	30	51	12

## KEY TO CODES

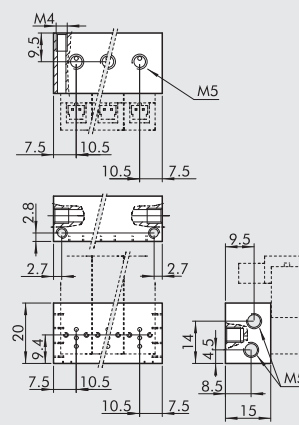
7 2 2 FAMILY	1 POSITIONING	1 POWER CONNECTION	3 Ø THROUGH	3 POWER	4 VOLTAGE	0 LED	1 MANUAL CONTROL	00 VERSION
Solenoid valves series "PLT-10"	1 Base and connection on same side 2 Base and connection opposite sides	1 Plug-in	3 0.6 mm 6 1.2 mm	3 0.7 W 5 0.8 W 8 3/0.3 W 9 4.2/0.7 W	3 12 VDC 4 24 VDC	0 - 1 LED	0 - 1 manual monostable	00 Standard

## DIMENSIONS OF BASES FOR PLT-10

1 POSN.



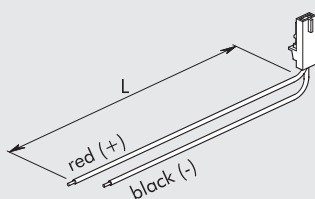
+ POSN.



Code	Description
W0400100101	Base 1 posn. for PLT-10
W0400100102	Base 2 posn. for PLT-10
W0400100103	Base 3 posn. for PLT-10
W0400100104	Base 4 posn. for PLT-10
W0400100105	Base 5 posn. for PLT-10
W0400100106	Base 6 posn. for PLT-10
W0400100107	Base 7 posn. for PLT-10
W0400100108	Base 8 posn. for PLT-10
W0400100109	Base 9 posn. for PLT-10
W0400100110	Base 10 posn. for PLT-10

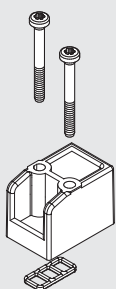
## ACCESSORIES

## PLUG-IN CONNECTOR



Code	Description
W0970512000	MACH 11 PLUG-IN connector L = 300

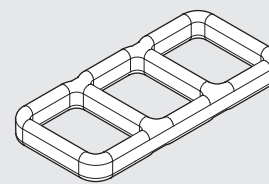
## CAP FOR UNUSED POSITION



Code	Description	Weight [g]
W0400100200	Cap 10 mm	6

## SPARE PARTS

## INTERFACE GASKET



Code	Description
0226009701	PLT-10 GASKET

N.B. 50 for pack

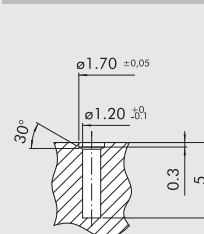
## STANDARD SECURING SCREW (FOR ALUMINIUM)



Code	Description
0226009702	PLT-10 screw for aluminium

N.B. 100 for pack

## SECURING SCREWS FOR TECHNOPOLYMER



Code	Description
0226009703	Screw PLT-10 for technopol.

N.B. 100 for pack

When mounting on technopolymer bodies, use these screws instead of the ones supplied with the PLT-10.  
**ATTENTION:** approximative dimensions for not added glass plastic materials It's always advisable to effect assembling tests.