

Data sheet

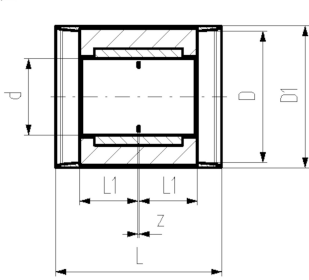
valid from: 9/13/21



COOL-FIT 4.0 Coupler d32-d225

Model:

- Pre-insulated PE100 SDR 11 metric
- Insulation made from GF HE foam
- Impact resistant. Color: black
- Integrated sealing lip, for a moisture-proof and vapour tight sealing



d/D (mm)	SDR	DN (mm)	PN (bar)	Code	Weight (kg)	D1 (mm)	L (mm)	L1 (mm)	z (mm)	closest inch (inch)
32/90	11	25	16	738 913 108	0.179	97	127	36	5	1
40/110	11	32	16	738 913 109	0.129	117	133	40	3	1 ¼
50/110	11	40	16	738 913 110	0.169	117	141	44	3	1 ½
63/125	11	50	16	738 913 111	0.240	132	149	48	3	2
75/140	11	65	16	738 913 112	0.520	147	163	55	3	2 ½
90/160	11	80	16	738 913 113	0.750	168	178	62	4	3
110/180	11	100	16	738 913 114	0.831	188	198	72	4	4
160/250	11	150	16	738 913 117	1.726	258	233	90	3	6
225/315	11	200	16	738 913 120	3.783	324	275	110	5	8

The technical data are not binding. They neither constitute expressly warranted characteristics nor guaranteed properties nor a guaranteed durability. They are subject to modification. Our General Terms of Sale apply.

Georg Fischer Piping Systems Ltd, Postfach, CH-8201 Schaffhausen/Switzerland

Phone +41 -(0)52-631 1111

e-mail: info.ps@georgfischer.com

Internet: <http://www.gfps.com>