



High-frequency Knockers FPK

Properties

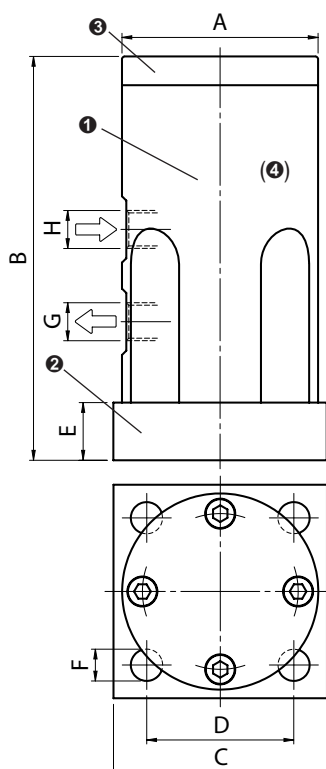
- High impact frequency 1'350 – 4'600 min⁻¹
- High force range 195 – 56'350 N
- Lubrication-free
- Applicable up to 120°C, HT version up to 150°C and LT version down to -40 °C on request
- Applicable in dusty environments
- Also available with ATEX certification

Field of application

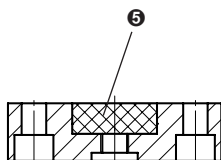
Wide range of application, for example knocking off adhering material from container walls such as silos, chutes, filter outlets, reactors and pipelines. Excellent use for food, beverage and pharmaceuticals.

Construction

- The piston bounces against an air cushion - or with impact plate - against one of the two synthetic baffle plates included in the delivery.
- Additional impact regulation is provided by the two supplied baffle plates of varying hardness.
- Extra hard and non-corrosive surface through aluminium oxide – generated by titaniferous electrolyte.



- ❶ Aluminium housing hard Ematal coated
- ❷ Baseplate hard Ematal coated
- ❸ Cap hard Ematal coated
- ❹ Piston of coated steel
- ❺ Baffle plate of synthetic material



Supplied with two baffle plates. The hard one (white) is premounted.

Dimensions and weights

| Model | A [mm] | B [mm] | C [mm] | D [mm] | E [mm] | F [mm] | G Thread | H Thread | Weight [kg] |
|--------|-----------|-----------|-----------|-----------|-----------|-----------|-------------|-------------|----------------|
| FPK-40 | ø 68 | 140 | 74 | 51 | 20 | 11 | G 1/4" | G 1/4" | 1.20 |
| FPK-55 | ø 94 | 191 | 104 | 78 | 25 | 13 | G 3/8" | G 3/8" | 4.70 |

Technical data

| Model | Baffle plate | Frequency [x 1000 min ⁻¹] | | | Force (peak) [N] | | | Air consumption [l/min] | | |
|--------|--------------|--|-------|-------|---------------------|--------|--------|----------------------------|-------|-------|
| | | 2 bar | 4 bar | 6 bar | 2bar | 4 bar | 6 bar | 2 bar | 4 bar | 6 bar |
| FPK-40 | none | 2.10 | 2.40 | 2.80 | 195 | 455 | 730 | 93 | 150 | 225 |
| | soft | 2.80 | 3.90 | 4.60 | 3'920 | 10'410 | 15'030 | 100 | 195 | 360 |
| | hard | 2.80 | 3.90 | 4.60 | 7'240 | 14'990 | 22'750 | 100 | 195 | 360 |
| FPK-55 | none | 1.35 | 1.75 | 2.05 | 510 | 1'165 | 1'985 | 162 | 360 | 470 |
| | soft | 2.20 | 3.40 | 4.30 | 5'430 | 21'310 | 36'570 | 230 | 380 | 500 |
| | hard | 2.20 | 3.40 | 4.30 | 17'570 | 36'960 | 56'350 | 230 | 380 | 500 |